



**quadral** <sup>®</sup>  
*AURUM*

HIGH END - SOUNDBOOK 2020

**ACTIVE | PASSIVE**

STEREO · SURROUND · WIRELESS

LEGENDARY GERMAN  
ENGINEERING





# AURUM

**quadral**   
*AURUM*





## CONTENT

Introduction	4-5
AURUM active	6-15
AURUM passive	16-23
Floorstand speakers	24-39
Compact speakers	40-43
Home cinema	44-51
Overview	52-55

„THE **BEST** WE HAVE  
EVER BUILT“

**Sascha Reckert**, CTO quadral

From 1981 through today, quadral AURUM loudspeakers have been setting standards. Every generation combines consistency and innovation in a unique way. AURUM is no mainstream product. This high-end series from Hanover, Germany is for a person who loves the unrivalled; for a person who doesn't hesitate in taking the higher road.

Therefore, developing a new AURUM generation is an undertaking and commitment like no other, presenting huge opportunity and also challenges. At the beginning technical aspects are paramount. Physical limitations have to be considered; then there is development, measuring, rejecting and starting anew. This is how years invested in innovating go by, but at the end, the result is a loudspeaker that only needs to know one thing: how to inspire!

Technical finesse, metrics, the used material... everything falls into the background and gives space to the emotional power of music. We want to listen to the delicateness of how instruments harmonize; we want to feel that sense of rhythm through the finger-tips of the drummer. We want to get carried away by thrilling soundscapes. If we succeed, we have perfect loudspeakers in a new AURUM generation.

"AURUM is the best we have ever built", says Sascha Reckert, lead developer at quadral, "because we resolutely started at zero and

put every action to the test. We have developed a tweeter technology like no-one else worldwide. The chassis was designed new, from scratch, allowing us to create a beautifully balanced outcome. As it is shown from metrics and especially our test listeners, who smile brightly from the first to the last note, we have done things right".

**It is the love for detail, the meticulousness that is put into the development and manufacturing of AURUM products, which makes these loudspeakers so unrivalled. Nothing is left to chance; everything is merged to a harmonic unity.**

AURUM was not only made for music lovers. Especially in the home cinema segment these loudspeakers are able to shine with extraordinary dynamics and perfect speech quality. AURUM inspires sins – the eye follows the straight lines, gets lost in the polished surface, our ears pricked forward, the sound spectrum delivered directly to the emotional center of the brain whilst our belly rounds soaks-up the comfortable feeling of well-being.

**Do not only listen, but experience AURUM – the power, the dynamics, the sublime spirit.**



DiracLive



TIDAL

airable



# AURUM ACTIVE

**THE HIGH END STREAMING, ACTIVE SPEAKER**  
POWER, CONTROL, PRECISION

OUR CLAIM - PERFECTION. „A project like the new AURUM active loudspeakers can't be realized without precision in all the details. This begins with the development, continues in the production and is accompanied by perfectly coordinated purchasing and sales. The result is a product that is sophisticated in all respects and that only serves one purpose - the perfect enjoyment of music!"

Sascha Reckert, chief engineer.

HANDMADE IN  
GERMANY



# OUR DEMAND PERFECTION

The AURUM active speakers ALPHA and GAMMA combine the finest technologies that modern audio technology can offer today.

They are based on the outstanding drivers of the AURUM 9 series, which have impressively proven their worth in countless tests.

The loudspeakers can be even more precise, even more finely and can work even more dynamically as they are operated by precisely controlled

High-performance power amplifiers in Class-D and Class-AB technology controlled by DSP. Who wants to know the top of today's loudspeaker technology just let the AURUM ALPHA or AURUM GAMMA off the leash!

Whether music, home cinema or TV sound - AURUM Active makes the best of it!





700 or 350 Watt precise dynamics per speaker



Interference-free signal transmission with ultra fast 96 kHz radio bridge



DIRAC Live® room calibration with up to 4 adjustable music profiles



App-Control for streaming, NAS, USB-A, TIDAL & airable



 DiracLive

airable

 TIDAL



# STREAMING WITHOUT DETOURS



airable



A highlight of the active AURUM models is the possibility of playing music from different sources. The easiest way: Insert a USB stick with music files, select the source at the APP and start the listening pleasure.

The modern APP helps to easily integrate the system to any home network - just a few clicks and your new speakers play the entire music collection stored on any network device.

If you like to listen to radio or podcasts from time to time, the AURUM Active speakers grant access to hundreds of international internet radio stations via Airable® service. Additionally we included the high-resolution streaming service Tidal®, which is far superior to standard compression in sound.

- Internet radio, music streaming via Tidal® and Airable®
- Access to network devices and USB storage media
- Simple operation with the AURUM app



Simple operation with the AURUM app



# SYNTHESIS OFF

## ROOM & LOUDSPEAKERS

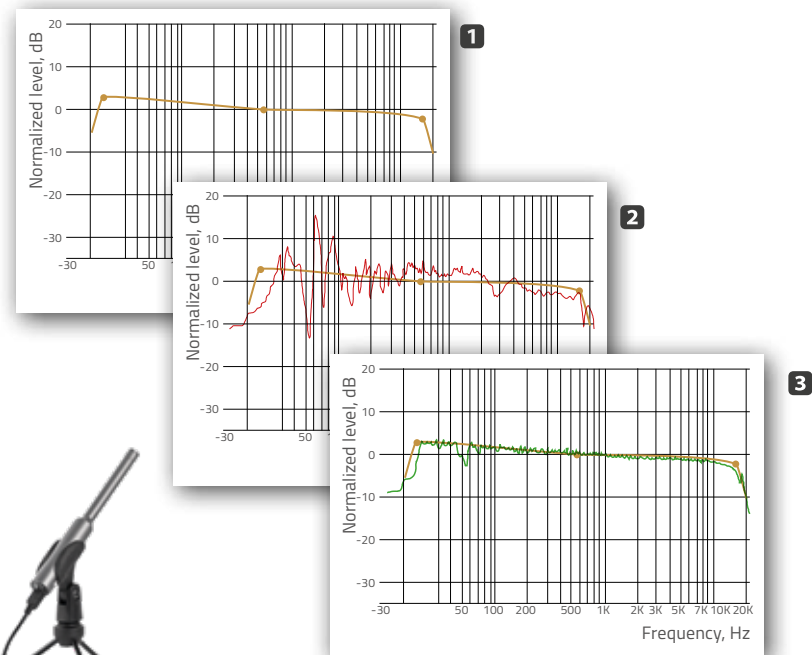
But even the best loudspeaker design can have something which has not been taken into account: the most diverse conditions in the respective listening rooms. And here beats the heart of the new AURUM Active loudspeakers: The integrated DIRAC Live® software and the supplied USB measuring microphone are the right tools to easily adapt the loudspeakers to any room and any taste of music.

Up to four presets can be computed and stored. By this you can listen to music either without or with one of the four filter settings. AURUM Active means not only technical perfection in detail, but also the the best possible adaptation to the listening characteristics at home!

- DIRAC Live® room calibration software
- Supplied USB measuring microphone
- 4 filter - presets for individual music enjoyment

- 1** Simply set and save the desired frequency curve as a preset.
- 2** Use the measuring microphone to determine the room characteristics.
- 3** Use the AURUM Active loudspeakers with the desired frequency curve.

 Dirac Live



Speaker calibration with DIRAC Live® and the included USB measurement microphone



# AURUM

## ALPHA



lite-magazin.de 10/2019 (GER)  
REFERENCE CLASS



STEREO 06/2019 (GER)



modernhifi.de 04/2019 (GER)

<b>Type</b>	3-way
<b>Principle</b>	closed
<b>Total output power</b>	700W@1%THD per speaker
<b>Frequency response</b>	17...48.000 Hz
<b>Crossover frequency</b>	110Hz/2,9 kHz
<b>Signal processing</b>	96 kHz
<b>Tweeter</b>	quadral quSENSE® 90 mm
<b>Midrange</b>	2x 180 mm Ø quadral ALTIMA®
<b>Woofers</b>	2x 265 mm Ø quadral ALTIMA®
<b>Inputs:</b>	analogue balanced, analogue unbalanced, S/PDIF (optical) USB-A, Ethernet, WLAN
<b>Dimensions (HxWxD)</b>	121 x 28 x 51 cm
<b>Weight</b>	74,1 kg
<b>Finish</b>	Black Piano finish White Piano finish Individual custom finish



# PRECISION ON THE POINT

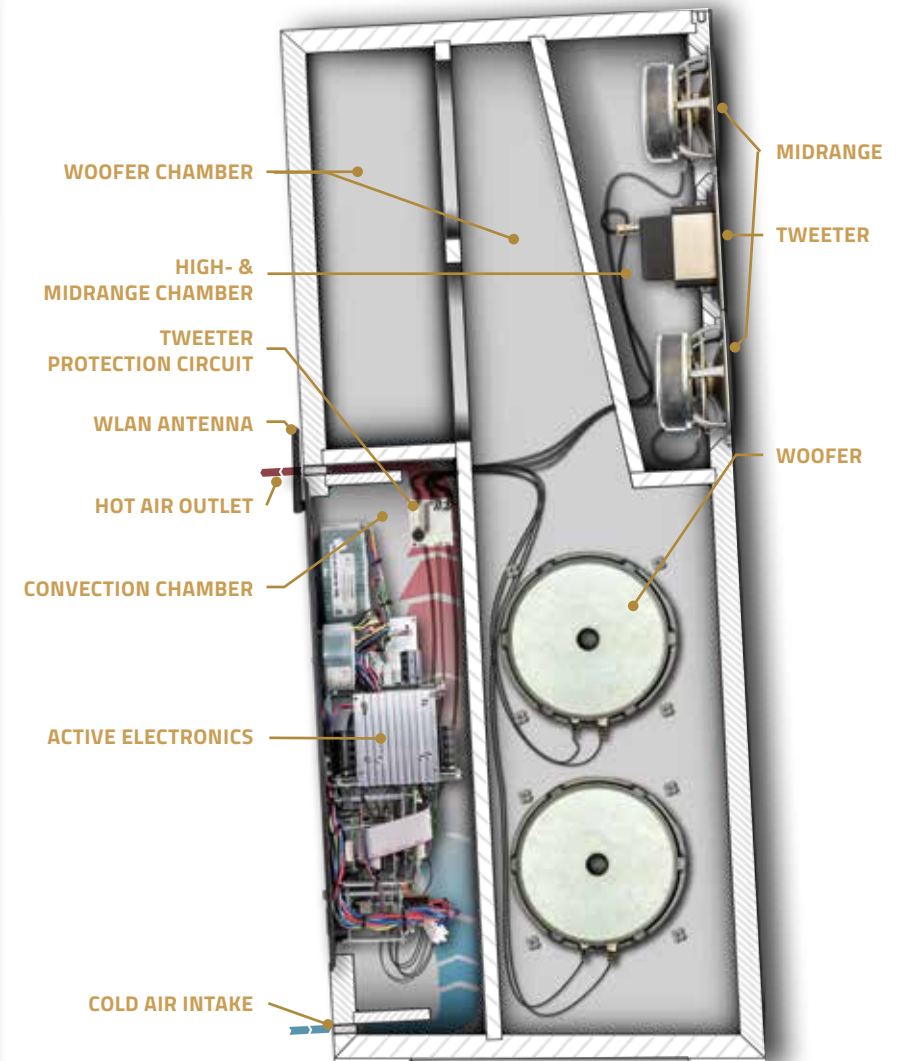
Some details clearly show the accurate and elaborate work of quadral's engineering power. For example, the quadral quSENSE®-tweeters are manufactured with such low tolerances, that no other vendor could guarantee - that is why we started to manufacture this excellent tweeter by ourselves in Germany. Just as precisely we have chosen the technology for the radio connection between the loudspeakers.

These work with an extremely stable and high-resolution signal transmission. The electronics are cooled without fans and without large heat sinks. We use the natural chimney effect and thanks to the separated chamber in the housing, the sensitive electronics gets effectively protected against the enormous pressure fluctuations. A powerful DSP in combination with strong power amplifiers enable clean and impulse-true 96 kHz data processing. Just the right thing for your show piece.

- Clean and impulse-true 96 kHz/ 24bit connection between the loudspeakers
- Convection cooling of the electronics (chimney effect)
- Pressure-protected electronics through separate chamber



Receiver speaker



Transceiver speakers  
with 96 kHz / 24bit pulse-accurate and clean connection

# ACTIVE ELECTRONICS WITH STREAMING PLATFORM

HANDMADE IN  
GERMANY



Genuine German engineering: The concentrated power and sophisticated control are the central features of the new AURUM Active electronics. Both models draw their power from Class-D High power amplifiers for the low and midrange. For the tweeter part we use musical analog power amplifiers. The total output of the AURUM GAMMA is 350W@1% THD per speaker.

The larger AURUM ALPHA achieves a brilliant 700W@1% THD per speaker. The modules are controlled via a digital High-performance signal processor (DSP). The DSP determines the working conditions for each loudspeaker chassis with extreme precision. The performance is rounded off with balanced and unbalanced analog inputs and an optical S/PDIF digital input.

- Class-D high power amplifier for the low and midrange
- Analogue power amplifier for the high frequencies.
- Fulminant 700 Watt @ 1% THD per speaker for the AURUM ALPHA
- 350 watts output per speaker for the AURUM GAMMA





fairaudio.de 03/2020 (GER)



stereoplay 06/2019 (GER)



Active speaker  
Luxury class  
areadvd.de 06/2019 (GER)



likehifi.de 04/2019 (GER)



lowbeats.de 01/2019 (GER)



# AURUM GAMMA

<b>Type</b>	3-way
<b>Principle</b>	closed
<b>Total output power</b>	350W@1%THD per speaker
<b>Frequency response</b>	20...48.000 Hz
<b>Crossover frequency</b>	115Hz/3 kHz
<b>Signal processing</b>	96 kHz
<b>Tweeter</b>	quadral quSENSE® 70 mm
<b>Midrange</b>	2x 155 mm Ø quadral ALTIMA®
<b>Woofer</b>	2x 235 mm Ø quadral ALTIMA®
<b>Inputs:</b>	analogue balanced, analogue unbalanced, S/PDIF (optical) USB-A, Ethernet, WLAN
<b>Dimensions (HxWxD)</b>	111 x 25 x 46 cm
<b>Weight</b>	54,9 kg
<b>Finish</b>	Black Piano finish White Piano finish Individual custom finish





# AURUM | INSIDE

## **Form follows function, follows form, follows function...**

The AURUM 9 loudspeaker cabinet design has never been this elaborate. Inside are massive braces and insulated walls. Wedge-shaped midrange chambers also provide a clear reduction of unwanted standing waves in this big floor-stander. Even the bevelled housing edges improve the omni directional sound characteristics.

Besides the tonal aspects, this latest design plays a distinctive role in our future development. Loudspeakers are furniture that have to fit harmoniously into their environment. AURUM 9 clearly demonstrates a language of reducing form. Exquisite high gloss lacquer finishes – in custom colors and oiled real wood are available. Polished chrome helps further accentuate a specific level of luxury. Slenderness and subtlety is achieved by tapered lines and carefully considered contouring. Both TITAN and VULKAN also deploy specially developed 'sandwich' type feet which perfectly isolate them from the ground.

Optionally, the fronts can be covered with neutral fabric covers which are meticulously framed and supported thanks to the metal frame.





# quadral quSENSE®

## THE HEART OF AURUM

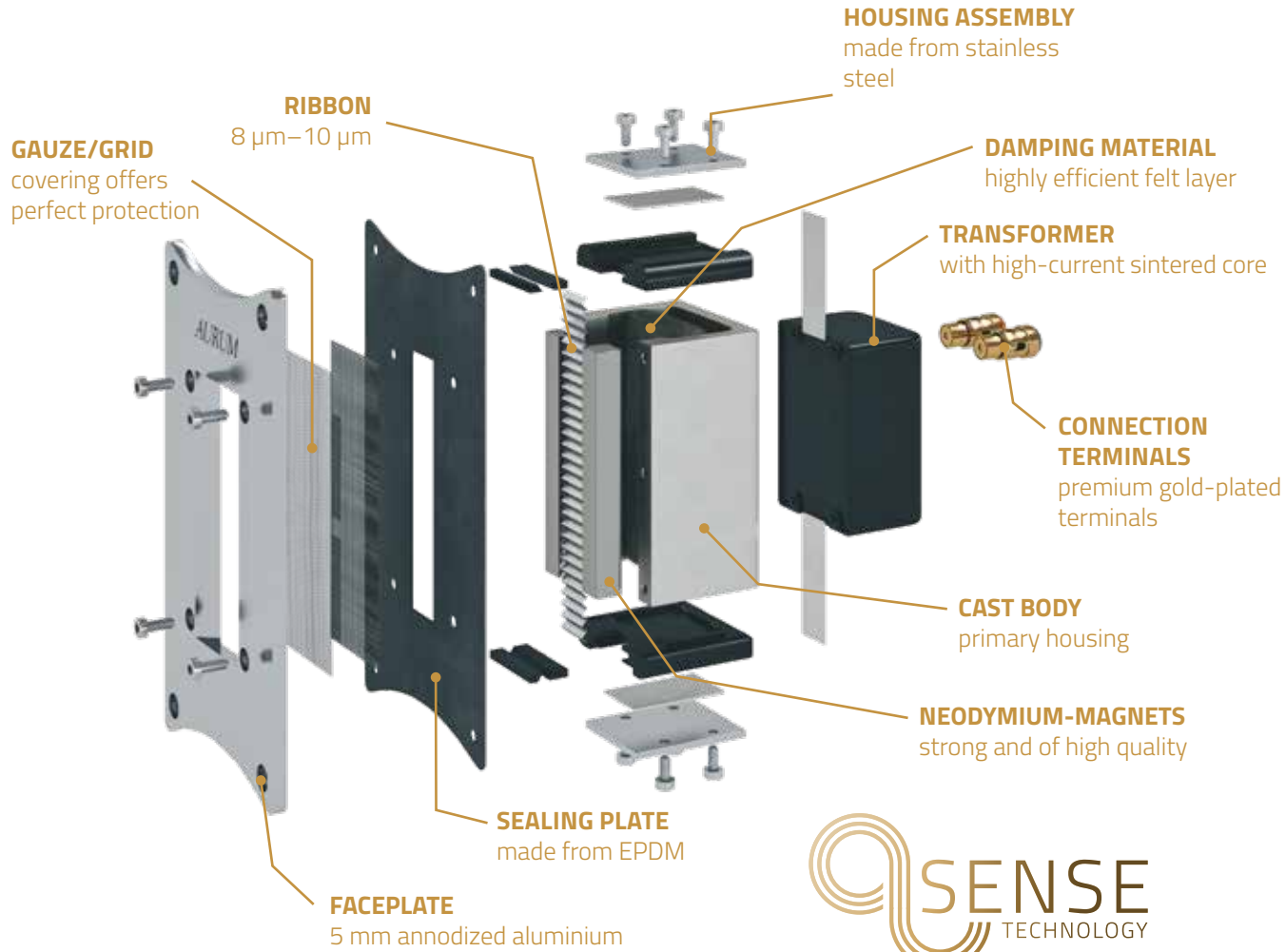
From the tiny shelf speaker to the strong TITAN, AURUM 9 loudspeakers utilize the new quadral quSENSE® tweeter technology – developed and manufactured by quadral in Hanover.

In comparison to conventional ribbon tweeters, quadral quSENSE® is the product of a short and wide ribbon. Therefore the membrane surface is highly resilient. The result is impressive: extremely low

distortions and a vertical radiation behaviour – one of which you would not expect from a ribbon.

In addition comes an unrivalled, finely drawn and hugely detailed sound picture of enormous clarity. The quadral quSENSE® – sees the tweeter placed very closely to the respective midrange speaker. As a result, a most harmonic acoustic center emerges providing the ultimate listening pleasure.





HANDMADE IN GERMANY



# quadral ALTIMA®

## WE RE-INVENTED OUR PREVIOUS 'BEST'

Even generation 9 relies on the proven quadral ALTIMA®- technology; our patented and world's only aluminium, titanium and magnesium compound that guarantees a perfect vibration behaviour for extreme speed and accuracy, and boasting zero unwanted disturbances and influences with the end product.

In contrast to the previous generation, the new membrane surface is homogenous, without a dust cap and with a clear improvement in radiation behaviour and fine dynamics.

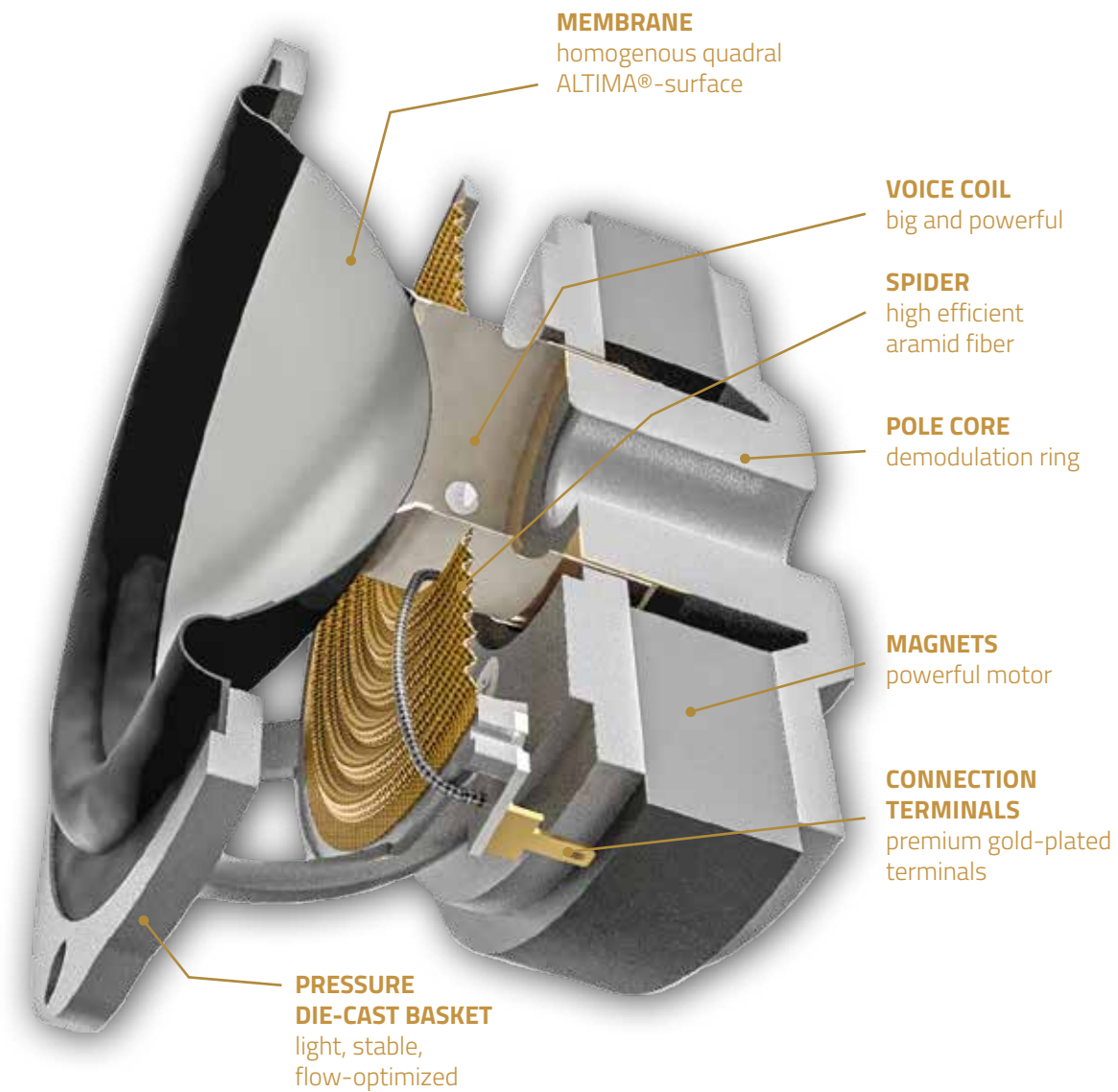
The alu-die-cast basket is also a completely new construction with mini-

mal flow losses. Continuing with more new technological advancement is our impressive voice coil. In combination with the extremely strong drivers, our new voice coil provides a new optimum in dynamics, capacity and control and, of course our passion for attention to detail.

For the reduction of harmonic (distortion factor) and none harmonically (IM, Doppler) distortions, copper caps were placed on the pole cores of all drivers.

**Many fine details – when added together make for an outstanding AURUM sound picture.**





# AURUM IN DETAIL

## PRESSURE CHAMBER

### The AURUM recipe for power and dynamics

Two powerful woofers - that work by way of a pressure chamber in the front and a bass reflex chamber at the back. The theoretical description of this being the **AURUM pressure chamber**.

In effect, this principle is a combination of deep and kick-bass. Two attributes which only a few loudspeakers combine. New with the AURUM 9 is the **bass reflex port which is placed in the front**, between the woofers. This facilitates the setting of the loudspeakers and the impulsivity.

Once more, the pressure chamber becomes a visual highlight again, interplaying beautifully with the curvatures and form of the woofer.



## THE FINISH

Superior materials, multi-layer lacquered finish in a high-gloss or piano-finish; oiled woods and polished chrome parts provide a luxurious and still subtle, overall impression.

**AURUM 9 is available as standard in black and white. On demand, we also offer lacquering of your loudspeaker in your personal RAL-tone.**



## THE TERMINAL

AURUM loudspeakers are equipped with high class Bi-Wiring terminals made of aluminium. For the optimal adjustment to spatial conditions and personal taste, they have level controls for the treble range. The models TITAN, BASE TITIAN and VULKAN are also individually adjustable in the low-frequency and mid-range areas too.

## THE FOOT

The floorstanders TITAN and VULKAN utilize 'sandwich feet', decoupling the body from the ground. All AURUM loudspeakers provide for the deployment of optionally available spikes.





# AURUM TITAN

**GENERATION 9 OF A LEGEND:**  
FASCINATING, ROUSING, INSPIRING ...





## AURUM TITAN

<b>Type</b>	3-way
<b>Principle</b>	Pressure chamber / bass reflex
<b>Nominal / music power</b>	500/800 W
<b>Frequency response (Hz)</b>	18...65.000 Hz
<b>Crossover frequency (Hz)</b>	160/3.100 Hz
<b>Efficiency (dB/1W/1m)</b>	88 dB
<b>Impedance</b>	4 $\Omega$
<b>Tweeter</b>	quadral quSENSE® 90 mm
<b>Midrange</b>	2x 180 mm $\varnothing$ quadral ALTIMA®
<b>Woofers</b>	2x 265 mm $\varnothing$ quadral ALTIMA®
<b>Size (HxWxD)</b>	145 x 32 x 51 cm
<b>Weight</b>	83 kg

# THE LEGEND IS ALIVE

In 1981 the first TITAN made history. With its presence and its exceptional sound it has inspired trade press and customers equally throughout time. Now, 35 years on, the 9th generation sees the light of day. Again it makes its mark: 145 cm tall, more than 80 kg of pure handcrafted excellence. The high / midrange area is a combination of quadral ALTIMA® and quadral quSENSE® in a D'appolito-arrangement. In the low range area, you'll discover a powerful pressure chamber with two strong drivers.

The result is impressive: extreme dynamics paired with an enormous sound stage and incomparable sovereignty. The room becomes a concert hall, massively fuelled, and as always, with an unrivalled ability to pamper the most delicate of moments too. The quadral quSENSE®-technology works with exceptional low distortion into highest level areas. The powerful low bass provides the necessary foundation for a typical neutral AURUM sound.

**TITAN excites audiophile connoisseurs as well as owners of high-quality home cinema installations.**



audiovision  
Issue 07/2017 (GER)  
Reference and Highlight



AURUM Set-Test:  
TITAN, VULKAN, BASE TITAN  
and PHASE



Floorstand-Speakers  
Luxury class  
areadvd.de 09/2016 (GER)



lowbeats.de 07/2016 (GER)



STEREO  
Special Issue 02/2018 (GER)



stereoplay 08/2016 (GER)



HIFI & MUSIK JOURNAL  
02/2019 (GER)



# AURUM **VULKAN**

**ONE NAME – ONE PHILOSOPHY**

EXPLOSIVE, PROFOUND, AWE-INSPIRING



# AUDIOPHILE POWER

The more calmly you dedicate yourself to a task, the more authentic and accurate the result. The new AURUM VULKAN is capable of sheer inexhaustible reserves of power and also finesse, which is why it renders naturally and with ease at the highest levels. As a result, it takes you on a musical journey, one that's shaped by power and sovereignty. Crystal clear highs bewitch, while rich and dry basses make music a totally perceptible experience. Its neutral tuning keeps the VULKAN close to the original too.

Like the big TITAN, the VULKAN also utilizes a high / midrange area of D'appolito-arrangement. The rendered frequency range melts in to harmonic unity, powerfully supported by a pressure chamber with two 235 mm quadral ALTIMA®-drivers.

**AURUM VULKAN is outstanding, and a perfect pairing for exquisite stereo pleasure but also a rampant delight for "level-orgies" in your home cinema.**



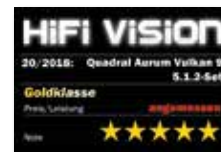
HEIMKINO 1/2-2018 (GER)  
**HIGHLIGHT**  
 (with RODAN, BASE MAXIME, PHASE and ORKUS)



AUDIO 01/2017 (GER)  
 Price / perf.: **OUTSTANDING**



STEREO 03/2018 (GER)  
 Sound level: 91%  
 Price / perf.: **EXCELLENT**



HiFi Vision 20/2018 (GER)  
 (with RODAN, PHASE, ORKUS and BASE MAXIME)



AUDIO TEST 08/2019 (GER)  
**REFERENCE CLASS**



Floorstand speaker  
**LUXUSKLASSE**  
 areadvd.de 10/2018 (GER)

# AURUM VULKAN

<b>Type</b>	3-way
<b>Principle</b>	Pressure chamber / bass reflex
<b>Nominal / music power</b>	350/600 W
<b>Frequency response (Hz)</b>	21...65.000 Hz
<b>Crossover frequency (Hz)</b>	220/3.000 Hz
<b>Efficiency (dB/1W/1m)</b>	88 dB
<b>Impedance</b>	4 $\Omega$
<b>Tweeter</b>	quadral quSENSE® 70 mm
<b>Midrange</b>	2x 155 mm $\varnothing$ quadral ALTIMA®
<b>Woofer</b>	2x 235 mm $\varnothing$ quadral ALTIMA®
<b>Size (HxWxD)</b>	120 x 28 x 46 cm
<b>Weight</b>	54,9 kg





The background of the advertisement features a woman with blonde hair, wearing a white sleeveless top and light-colored pants, sitting on the floor and leaning against a wall. She is looking towards the right. In the foreground, there is a black Aurum Montan audio system consisting of a large floor-standing speaker on the left and a stack of two smaller components (likely a tuner and amplifier) on the right. The overall aesthetic is clean and modern.

# AURUM MONTAN

A MERGING OF TECHNOLOGY AND MUSICALITY  
HARMONY, ORIGINALITY... WITH EASE





## AURUM MONTAN

<b>Type</b>	3-way
<b>Principle</b>	Pressure chamber / bass reflex
<b>Nominal / music power</b>	250/400 W
<b>Frequency response (Hz)</b>	26..65,000 Hz
<b>Crossover frequency (Hz)</b>	320/3.100 Hz
<b>Efficiency (dB/1W/1m)</b>	87 dB
<b>Impedance</b>	4 $\Omega$
<b>Tweeter</b>	quadral quSENSE® 70 mm
<b>Midrange</b>	155 mm $\emptyset$ quadral ALTIMA®
<b>Woofers</b>	2x 180 mm $\emptyset$ quadral ALTIMA®
<b>Size (HxWxD)</b>	111 x 25 x 39 cm
<b>Weight</b>	39,5 kg

# ENJOY SOUND

„Keep calm“ – this is the motto describing the AURUM MONTAN. Effortlessly, and almost casually, this impressive loudspeaker renders everything superbly that it's supplied through the aluminium terminal. It works extremely harmonically therefore, knowing how to convince and how to combine rich foundations with crystal clear highs. The musicality of the MONTAN is nothing less than impressive and thrilling. Even low passages are reproduced in full bloom. Turn up the volume level control and see the MONTAN keep its cool – it fills even big spaces with voluminous sound.



VIDEO 03/2017 (GER)



[www.fairaudio.de](http://www.fairaudio.de) (GER)  
Award 2017



FIDELITY award 2018  
04/2018 (GER)



HiFi Test 01/2020 (GER)





# AURUM **ORKAN**

**THE UNCOMPROMISING**  
BRILLIANT, TRANSPARENT, IMPULSIVE





## AURUM ORKAN

<b>Type</b>	3-way
<b>Principle</b>	bass reflex
<b>Nominal / music power</b>	200/350 W
<b>Frequency response (Hz)</b>	29...65.000 Hz
<b>Crossover frequency (Hz)</b>	260/3.700 Hz
<b>Efficiency (dB/1W/1m)</b>	87 dB
<b>Impedance</b>	4 $\Omega$
<b>Tweeter</b>	quadral quSENSE® 50 mm
<b>Midrange</b>	155 mm $\varnothing$ quadral ALTIMA®
<b>Woofer</b>	2x 180 mm $\varnothing$ quadral ALTIMA®
<b>Size (HxWxD)</b>	103 x 22 x 36 cm
<b>Weight</b>	29,1 kg

# POWER IN PURE FORM

Despite its comparatively slim and compact dimensions of just over one metre in height and only 22 cm in width, the new ORKAN achieves uncompromising acoustic performance and comes with exclusive and proven AURUM attributes: the quadral quSENSE® aluminium ribbon tweeter, manufactured in-house in Hanover, Germany, guarantees a brilliant high frequency range with excellent impulse fidelity up to 65,000 Hz. The quadral ALTIMA® midwoofer and the two quadral ALTIMA® subwoofers ensure trans-

parent midranges and an enormously powerful bass range, which only reaches its limit at 29 Hz.

The slim ORKAN column is highly sophisticated but still unobtrusive. It can be easily integrated into any living environment and can rapidly ignite acoustic fireworks with above-average auditory spaciousness and astonishing resolution.











# COMPACT SPEAKER

**OUTSTANDING SOUND – FOR SUCH DIMENSIONS**  
FOR STEREO, FOR SURROUND, FOR CONNOISSEURS

# COMPACT

## AURUM SEDAN



<b>Type</b>	2-way
<b>Principle</b>	Bass reflex
<b>Nominal / music power</b>	120/180 W
<b>Frequency response (Hz)</b>	33...65.000 Hz
<b>Crossover frequency (Hz)</b>	2.800 Hz
<b>Efficiency (dB/1W/1m)</b>	85 dB
<b>Impedance</b>	8 $\Omega$
<b>Tweeter</b>	quadral quSENSE® 70 mm
<b>Woofer</b>	180 mm $\varnothing$ quadral ALTIMA®
<b>Size (HxWxD)</b>	39 x 23 x 35 cm
<b>Weight</b>	13,6kg

The AURUM SEDAN is technically a floorstander in a compact size. That's the impression you get when you're immersed by voluminous sound as the sound stage unfolds around you. The presence is impressive, the level stability phenomenal. As if they were made of one piece, the quadral quSENSE®-tweeter and big quadral ALTIMA®-driver play so smoothly together.

SEDAN is the perfect loudspeaker for everyone who prefers discreet optics without having to lower their expectations.



lowbeats.de 06/2017 (GER)

# CLASS

## AURUM GALAN

<b>Type</b>	2-way
<b>Principle</b>	Bass reflex
<b>Nominal / music power</b>	80/140 W
<b>Frequency response (Hz)</b>	36...65.000 Hz
<b>Crossover frequency (Hz)</b>	2.900 Hz
<b>Efficiency (dB/1W/1m)</b>	85 dB
<b>Impedance</b>	4 Ω
<b>Tweeter</b>	quadral quSENSE® 50 mm
<b>Woofers</b>	155 mm Ø quadral ALTIMA®
<b>Size (HxWxD)</b>	33 x 21 x 29 cm
<b>Weight</b>	10,5 kg

GALAN is the smallest member of the AURUM family. Still, the compact loudspeaker is able to effortlessly build and deliver a big stage presence. A well balanced sound picture with amazing depth captivates immediately. Fine resolution through the quadral quSENSE®-tweeter excels and depicts every sound detail with perfect placement.

AURUM GALAN is suitable for stereo alignment, and is excellent for small to medium spaces. It's the perfect supplement for bigger home cinema installations too.



fairaudio.de  
07/2017 (GER)



Hi-Fi-World 02/2017  
United Kingdom

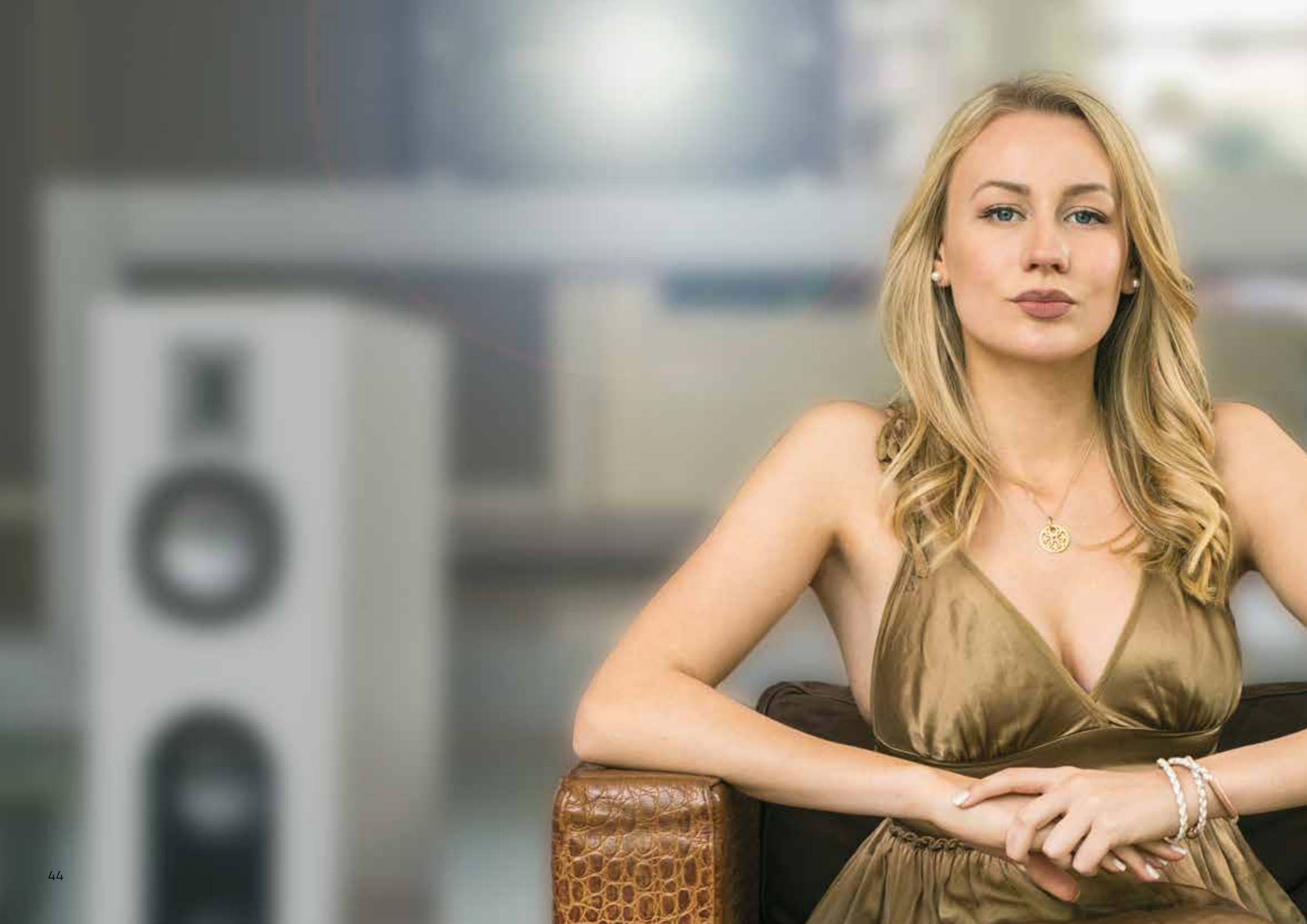


stereoplay  
12/2016 (GER)



lite-magazin.de  
10/2016 (GER)







# HOMECINEMA WORLD

EXPERIENCE WITH ALL SENSES

CRYSTAL CLEAR - DEEPLY PROFOUND - EVERYWHERE

# AUDIO FOCUS

High-quality home cinema solutions are a real challenge for loudspeakers. Different attributes and demands are requested of them: low bass, level stability, the dynamics and also the ability to deliver fine resolution and excellent intelligibility. The center loudspeaker is responsible for the latter, meaning it has to fit in seamlessly into the 'surround compound'. Consistent with the AURUM floorstander and compact speaker, we

offer three different dimensioned center loudspeakers: BASE TITAN for the big loudspeakers TITAN, VULKAN, and MONTAN, the 3-way-center BASE MAXIME, matching perfectly with the models VULKAN, MONTAN and ORKAN, and the compact Center BASE 9 for ORKAN, SEDAN and GALAN.

# AURUM BASE TITAN

<b>Type</b>	3-way
<b>Principle</b>	Pressure chamber / bass reflex
<b>Nominal / music power</b>	450/750 W
<b>Frequency response (Hz)</b>	23...65.000 Hz
<b>Crossover frequency (Hz)</b>	200/2.900 Hz
<b>Efficiency (dB/1W/1m)</b>	88 dB
<b>Impedance</b>	4 $\Omega$
<b>Tweeter</b>	quadral quSENSE® aluminium 90 mm
<b>Midrange</b>	180 mm $\varnothing$ quadral ALTIMA®
<b>Woofer</b>	2x 265 mm $\varnothing$ quadral ALTIMA®
<b>Size (HxWxD)</b>	36 x 85 x 45 cm
<b>Weight</b>	52.5 kg



Classy and impressive - this is the big one, the Center BASE TITAN which takes design cues and snaps glances from the original TITAN. Therefore understandably, this BASE TITAN demonstrates the same musicality and abilities as our AURUM top model. Together with a TITAN, or VULKAN for that matter, there arises a homogenous companionship. This massive center works powerfully and with effortless strength, whilst still remaining sophisticated and delicate – a truly sublime experience.



audiovision  
Issue 07/2017 (GER)  
Reference and Highlight



AURUM Set in test:  
TITAN, VULKAN, BASE  
TITAN und PHASE



# KEY

## AURUM **BASE MAXIME**



<b>Type</b>	3-way
<b>Principle</b>	Bass reflex
<b>Nominal / music power</b>	250/400 W
<b>Frequency response (Hz)</b>	27...65.000 Hz
<b>Crossover frequency (Hz)</b>	300/3.800 Hz
<b>Efficiency (dB/1W/1m)</b>	87 dB
<b>Impedance</b>	4 $\Omega$
<b>Tweeter</b>	quadral quSENSE® 50 mm
<b>Midrange</b>	155 mm $\varnothing$ quadral ALTIMA®
<b>Woofer</b>	2x 180 mm $\varnothing$ quadral ALTIMA®
<b>Size (HxWxD)</b>	24 x 62 x 36 cm
<b>Weight</b>	23,4 kg

The center loudspeaker, BASE MAXIME, is perfectly tuned to the floor standers (VULKAN, MONTAN, ORKAN) of the AURUM series. The compact 3-way construction has impressive rendering and plays along on higher levels. Speech is crystal clear and detailed – perfectly matching your music or movie soundtrack.



VIDEO 03/2017 (GER)



HEIMKINO 1/2-2018 (GER)  
HIGHLIGHT  
(BASE MAXIME with VULKAN,  
RODAN, PHASE and ORKUS)

# ELEMENT

## AURUM BASE

<b>Type</b>	2-way
<b>Principle</b>	closed
<b>Nominal / music power</b>	150/250 W
<b>Frequency response (Hz)</b>	44...65.000 Hz
<b>Crossover frequency (Hz)</b>	3.300 Hz
<b>Efficiency (dB/1W/1m)</b>	85 dB
<b>Impedance</b>	8 $\Omega$
<b>Tweeter</b>	quadral quSENSE® 50 mm
<b>Woofers/midrange</b>	2x 155 mm $\varnothing$ quadral ALTIMA®
<b>Size (HxWxD)</b>	16 x 46 x 26 cm
<b>Weight</b>	10,4 kg

Its discreet appearance is deceptive, yet harnessing intense power within the compact form of the Center Base. Two quadral ALTIMA® drivers and the quadral quSENSE® tweeter melt together to provide homogeneous unity. Dialogues are rendered in perfect neutrality; whilst music is delivered dynamically and is beautifully detached. BASE also harmonizes perfectly with compact loudspeakers SEDAN and GALAN.



# SURROUNDED BY



## AURUM PHASE

<b>Type</b>	2-way
<b>Principle</b>	closed
<b>Nominal / music power</b>	150/250 W
<b>Frequency response (Hz)</b>	38...65.000 Hz variable
<b>Crossover frequency (Hz)</b>	3.200
<b>Efficiency (dB/1W/1m)</b>	85
<b>Impedance</b>	4 Ω
<b>Tweeter</b>	quadral quSENSE® 50 mm
<b>Woofer/midrange</b>	2x 155 mm Ø quadral ALTIMA®
<b>Size (HxWxD)</b>	53 x 27 x 14 cm
<b>Weight</b>	13,5 kg

AURUM PHASE are low, elegant wall mounted loudspeakers that are individually adjustable (to 60 degrees bendable for wall/ceiling installation). Therefore, they are perfectly suited for classic surround settings (5.1) and three dimensional sound effects (e.g. 11.2).

Convert your home cinema into a rousing world of experience with exciting sound from all sides. Two quadral ALTIMA®-chassis provide pressure and volume, the quadral quSENSE®-tweeter a crystal clear sound.



audiovision 07/2017 (GER)  
Reference and Highlight



AURUM Set in test:  
TITAN, VULKAN, BASE TITAN  
and PHASE



HEIMKINO 1/2-2018 (GER)  
**HIGHLIGHT**  
(PHASE with VULKAN, RODAN,  
BASE MAXIME and ORKUS)

# SOUND

## AURUM ORKUS

<b>Type</b>	Active subwoofer
<b>Principle</b>	Bass reflex / down-fire
<b>Nominal / music power</b>	500/600 W
<b>Frequency response (Hz)</b>	20... up to (50...200) Hz variable
<b>Crossover frequency (Hz)</b>	50...200 Hz
<b>Woofer</b>	320 mm Ø
<b>Input sensitivity (mV)</b>	250
<b>Stand-by-circuit</b>	Yes - energy saving
<b>Phase</b>	0...180°
<b>Supply voltage (V)</b>	115/230 ~ reversible
<b>Size (HxWxD)</b>	47 x 40 x 50 cm
<b>Weight</b>	33 kg

Dive into the acoustic depths of movie and sound. Experience dynamic effects, subtle bass fogs and even loose explosions. Enjoy the deepest notes of an organ or a double bass. There's 500 watts and a powerful 32cm woofer providing brutal violence and in the same breath, perfect control and delicateness where needed. All this together in a very compact chassis – and optically tuned to the new AURUM series.



VIDEO 03/2017 (GER)



# AURUM PRODUCT



## AURUM $\oplus$ ALPHA

## AURUM $\oplus$ GAMMA

<b>Type</b>	3-way	3-way
<b>Principle</b>	closed	closed
<b>Total output power</b>	700W@1%THD per speaker	350W@1%THD je per speaker
<b>Frequency response</b>	17...48.000 Hz	20...48.000 Hz
<b>Crossover frequency</b>	110Hz/2,9 kHz	115Hz/3 kHz
<b>Signal processing</b>	96 kHz	96 kHz
<b>Speaker</b>	quadral quSENSE® 90 mm	quadral quSENSE® 70 mm
<b>Tweeter</b>	2x 180 mm Ø quadral ALTIMA®	2x 155 mm Ø quadral ALTIMA®
<b>Midrange</b>	2x 265 mm Ø quadral ALTIMA®	2x 235 mm Ø quadral ALTIMA®
<b>Woofers</b>		
<b>Inputs:</b>	analogue balanced, analogue unbalanced, S/PDIF (optical) USB-A, Ethernet, WLAN	analogue balanced, analogue unbalanced, S/PDIF (optical) USB-A, Ethernet, WLAN
<b>Dimensions (HxWxD)</b>	121 x 28 x 51 cm	111 x 25 x 46 cm
<b>Weight</b>	74,1 kg	54,9 kg
<b>Finish</b>	Black Piano finish White Piano finish Individual custom finish	Black Piano finish White Piano finish Individual custom finish

ACTIVE SPEAKER

# OVERVIEW



*AURUM* ⊕ **TITAN**

*AURUM* ⊕ **VULKAN**

*AURUM* ⊕ **MONTAN**

*AURUM* ⊕ **ORKAN**

	<i>AURUM</i> ⊕ <b>TITAN</b>	<i>AURUM</i> ⊕ <b>VULKAN</b>	<i>AURUM</i> ⊕ <b>MONTAN</b>	<i>AURUM</i> ⊕ <b>ORKAN</b>
<b>Type</b>	3-way	3-way	3-way	3-way
<b>Principle</b>	Pressure chamber / bass reflex	Pressure chamber / bass reflex	Pressure chamber / bass reflex	Bass reflex
<b>Nominal/Music Power (W)</b>	500/800 W	350/600 W	250/400 W	200/350 W
<b>Frequency Response (Hz)</b>	18...65.000 Hz	21...65.000 Hz	26...65.000 Hz	29...65.000 Hz
<b>Crossover Frequency (Hz)</b>	160/3.100 Hz	220/3.000 Hz	320/3.100 Hz	260/3.700 Hz
<b>Efficiency (dB/1W/1m)</b>	88 dB	88 dB	87 dB	87 dB
<b>Impedance</b>	4 Ω	4 Ω	4 Ω	4 Ω
<b>Speaker</b>	<b>Tweeter</b> quadral quSENSE® 90 mm	<b>Tweeter</b> quadral quSENSE® 70 mm	<b>Tweeter</b> quadral quSENSE® 70 mm	<b>Tweeter</b> quadral quSENSE® 50 mm
	<b>Midrange</b> 2x 180 mm Ø quadral ALTIMA®	<b>Midrange</b> 2x 155 mm Ø quadral ALTIMA®	<b>Midrange</b> 155 mm Ø quadral ALTIMA®	<b>Midrange</b> 155 mm Ø quadral ALTIMA®
	<b>Woofers</b> 2x 265 mm Ø quadral ALTIMA®	<b>Woofers</b> 2x 235 mm Ø quadral ALTIMA®	<b>Woofers</b> 2x 180 mm Ø quadral ALTIMA®	<b>Woofers</b> 2x 180 mm Ø quadral ALTIMA®
<b>Level control</b>	Woofer ± 2 dB, Midrange ± 2 dB, Tweeter ± 2 dB	Woofer ± 2 dB, Midrange ± 2 dB, Tweeter ± 2 dB	Tweeter ± 2 dB	
<b>Size (HxWxD)</b>	145 x 32 x 51 cm	120 x 28 x 46 cm	111 x 25 x 39 cm	103 x 22 x 36 cm
<b>Weight (kg)</b>	83 kg	54,9 kg	39,5 kg	29,1 kg
<b>Finish</b>	Black Piano finish White Piano finish Individual custom finish	Black Piano finish White Piano finish Individual custom finish	Black Piano finish White Piano finish Individual custom finish	Black Piano finish White Piano finish

FLOORSTANDER

# AURUM PRODUCT



## AURUM SEDAN

## AURUM GALAN

## DESIGN STATIV G

**Type**  
**Principle**  
**Nominal/Music Power (W)**  
**Frequency Response (Hz)**  
**Crossover Frequency (Hz)**  
**Efficiency (dB/1W/1m)**  
**Impedance**  
**Speaker**      **Tweeter**  
                     **Midrange**  
                     **Woofers**  
**Level control**  
**Size (HxWxD)**  
**Weight (kg)**  
**Finish**

2-way  
 Bassreflex  
 120/180 W  
 33...65.000 Hz  
 2.800 Hz  
 85 dB  
 8 Ω  
 quadral quSENSE® 70 mm  
 –  
 180 mm Ø quadral ALTIMA®  
 Tweeter ± 2 dB  
 39 x 23 x 35 cm  
 13,6 kg  
 Black Piano finish  
 White Piano finish

2-way  
 Bassreflex  
 80/140 W  
 36...65.000 Hz  
 2.900 Hz  
 85 dB  
 4 Ω  
 quadral quSENSE® 50 mm  
 –  
 155 mm Ø quadral ALTIMA®  
 Tweeter ± 2 dB  
 33 x 21 x 29 cm  
 10,5 kg  
 Black Piano finish  
 White Piano finish

Speaker stand  
 with base plate  
 for AURUM SEDAN or  
 AURUM GALAN

59,2 x 27,5 x 37 cm  
 4,1 kg  
 Black  
 White

# COMPACT

# OVERVIEW



## AURUM BASE TITAN

3-way  
Pressure chamber / bass reflex  
450/750 W  
23...65.000 Hz  
200/2.900 Hz  
88 dB  
4 Ω  
quadral quSENSE® 90 mm  
180 mm Ø quadral ALTIMA®  
2x 265 mm Ø quadral ALTIMA®  
Woofers ± 2 dB, Midrange ± 2 dB,  
Tweeter ± 2 dB  
36 x 85 x 45 cm  
52,5 kg  
Black Piano finish  
White Piano finish

## AURUM BASE MAXIME

3-way  
Bassreflex  
250/400 W  
27...65.000 Hz  
300/3.800 Hz  
87 dB  
4 Ω  
quadral quSENSE® 50 mm  
155 mm Ø quadral ALTIMA®  
2x 180 mm Ø quadral ALTIMA®  
Tweeter ± 2 dB  
24 x 62 x 36 cm  
23,4 kg  
Black Piano finish  
White Piano finish  
Individual custom finish

## AURUM BASE

2-way  
closed  
150/250 W  
44...65.000 Hz  
3.300 Hz  
85 dB  
8 Ω  
quadral quSENSE® 50 mm  
155 mm Ø quadral ALTIMA®  
155 mm Ø quadral ALTIMA®  
Tweeter ± 2 dB  
16 x 46 x 26 cm  
10,4 kg  
Black Piano finish  
Individual custom finish

## AURUM PHASE

2-way  
closed  
150/250 W  
38...65.000 Hz  
3.200 Hz  
85 dB  
4 Ω  
quadral quSENSE® 50 mm  
–  
2x 155 mm Ø quadral ALTIMA®  
53 x 27 x 14 cm  
13,5 kg  
Black Piano finish  
Individual custom finish

## AURUM ORKUS

**Type**  
**Principle**  
**Nominal/Music Power (W)**  
**Frequency Response (Hz)**  
**Crossover Frequency (Hz)**  
**Woofers**  
**Input Sensitivity (mV)**  
**Stand-by-circuit**  
**Phase**  
**Supply voltage (V)**

Active subwoofer  
Bass reflex / down-fire  
500/600 W  
20... up to (50...200) Hz variable  
50...200 Hz  
320 mm Ø  
250  
yes, energy saving  
0...180° switchable  
115/230 ~ reversible

**Size (HxWxD)**  
**Weight (kg)**  
**Finish**

47 x 40 x 50 cm  
33 kg  
Genuine oiled walnut wood finish



More informations and local distributors at

**[www.quadral.com](http://www.quadral.com)**

[www.facebook.com/quadralhifi](https://www.facebook.com/quadralhifi)

[www.youtube.com/quadralhifi](https://www.youtube.com/quadralhifi)

**quadral GmbH & Co. KG**

Am Herrenhäuser Bahnhof 26  
30419 Hannover · Germany  
Telefon: +49 (0) 511 79 04-0  
E-Mail: [info@quadral.com](mailto:info@quadral.com)