



XcelSus
audio



瑞典·卓美聲

XCELSUS SWEDEN

創始人

原DLS首席設計師

CO FOUNDER & DESIGNER
OF DLS SWEDEN



Dawid
Koniarski

大卫

原DLS品牌首席設計師
聯合創始人

CO FOUNDER & DESIGNER OF DLS SWEDEN



EXCELLENCE TECHNOLOGY
NATURAL SOUND

卓越科技 · 美麗動聽

Hi-end汽車音響典範

XCELSUS IS A CAR AUDIO BRAND FROM SWEDEN, SCANDINAVIA. WITH NATURAL SOUND QUALITY AND EXQUISITE TONE, IT FASCINATES THE WORLD'S CAR AUDIO ENTHUSIASTS SINCE ITS INCEPTION.

DAVID KONIARSKI IS THE FOUNDER OF DLS SWEDEN, AS WELL AS THE FORMER PRESIDENT AND PRODUCT DESIGNER. WITH A THOROUGH STUDY OF THE NEW DIGITAL GENERATION AND THE NEW ENERGY VEHICLE GENERATION, ON TOP OF AN IMMENSE LOVE FOR CAR AUDIO AND DECADES OF EXPERIENCE IN THE BUSINESS, HE HAS DEVELOPED XCELSUS, THE REDEFINITION OF HI END CAR AUDIO.

WITH EXCELLENCE TECHNOLOGY AND A PURE SOUND, XCELSUS DEVELOPES A WIDE RANGE OF PRODUCTS FROM POWER AMPLIFIERS, SUB WOOFERS, SQ SPEAKERS, AS WELL AS A VARIETY OF COMPETITION-GRADE SQL SPEAKERS. XCELSUS IS SUITABLE FOR ALL DIFFERENT MODELS OF CARS AND INSTALLATION, GIVING MUSIC LOVERS AN ASTOUNDING LISTENING EXPERIENCE.

XCELSUS卓美聲，是來自北歐瑞典的汽車音響品牌。自創立以來，以自然溫潤，精緻華彩的音色，讓全球的汽車音響愛好者着迷。

XCELSUS卓美聲的創始人David Koniarski(大衛)，是前瑞典DLS總裁兼產品設計師，基於對汽車音響的熱愛，以及對新數位時代、新能源汽車時代的車載音頻的徹底研究，數十年對車載音頻的豐富經驗，以XCELSUS卓美聲重新定義車載音頻極致Hi-end。這也是XCELSUS(卓越、美麗的聲音的意思)的由來。

XCELSUS卓美聲：卓越科技，美麗動聽。現在XCELSUS卓美聲開發的系列產品，從DSP處理器，功率放大器，到SQ音質型喇叭，以及各種低音和競賽級的外場音質喇叭，XCELSUS卓美聲適合不同車型的安裝，給音樂愛好者們帶來極佳的聆聽體驗。

COAXIAL

SPEAKER

同軸揚聲器



黑鑽系列 — PRIMUM

2-WAY COAXIAL



XP 620

50W RMS

6.5"二分頻同軸喇叭



2-WAY COAXIAL

- Woofer 6.5" /16.5"cm polypropylene cone
- 16mm mylar tweeter
- Built-in crossover
- 50W RMS nominal power
- 75 watt max / 120 watt peak power
- Installation depth 63mm/2.48"
- Impedance 4 ohm
- Includes grilles

黑鑽系列 — PRIMUM



COMPONENT
SPEAKER

套裝揚聲器

暖/厚/滑/柔/透



黑鑽系列 — PRIMUM



Sweden

XP 6.2

55W RMS

6.5"二分頻套裝喇叭



6.5" 2 WAY COMPONENT SPEAKER

- 2-Way component set
- Woofer 6.5" / 16.5" cm polypropylene cone
- 20mm textile dome tweeter with accessories
- Separate crossover boxes
- 55 W RMS nominal power
- 70 Watt max / 140 watt peak power
- Installation depth 63mm / 2.48"
- Impedance 4 Ohm
- Includes grilles



XP 6.2B

55W RMS

6.5"二分頻套裝喇叭



6.5" 2 WAY COMPONENT SPEAKER

- 2-Way component set
- Woofer 6.5" / 16.5" cm hybrid textile cone
- 25mm textile dome tweeter with accessories
- Separate crossover boxes
- 80 W RMS nominal power
- 120 Watt max / 200 watt peak power
- Installation depth 65mm / 2.56"
- Impedance 4 Ohm
- Includes grilles



XU 6.2i

120W_{RMS}

6.5"二分頻套裝喇叭



6.5" 2 WAY COMPONENT SPEAKER

- 2-Way component set
- Woofer 6.5" / 16.5" cm aluminium cone
- 28mm textile dome tweeter with accessories
- Separate crossover boxes
- 120 W RMS nominal power
- 200 Watt max / 300 watt peak power
- Installation depth 66mm / 2.60"
- Impedance 4 Ohm
- Includes grilles



XU 6.2Ci

120W_{RMS}

6.5"二分頻套裝喇叭



6.5" 2 WAY COMPONENT SPEAKER

- 2-Way component set
- Woofer 6.5"/ 16.5" cm treated paper cone
- 28mm textile dome tweeter with accessories
- Separate crossover boxes
- 120W RMS nominal power
- 200 Watt max/ 300 watt peak power
- Installation depth 75mm/ 2.95"
- Impedance 3 Ohm
- Includes grilles





XUST30W

SQL高音喇叭

SQL WAVEGUIDE TWEETER

- Waveguide tweeter
- 30mm / 1.18" Textile dome diaphragm
- Power Handling-100W Peak
- Frequency response Hz 3k-20k
- Installation depth 45mm / 1.77"
- Impedance 4 ohm



SQL68

SQL分音器

SQL CROSSOVER

XUSM 8

8" 競賽級中低音喇叭

8" SQL MID BASS SPEAKER

- Woofer 8"/200mm non pressed paper cone
- Aluminum bullet phase plug
- Oversized screw terminal
- 125 W RMS nominal power
- 150 Watt max / 300 Watt peak power
- Installation depth 80mm/3.15"
- Impedance 4 Ohm
- Include grilles



XUSM 6

6.5" 競賽級中低音喇叭

6.5" SQL MID BASS SPEAKER

- Woofer 6.5" / 165mm non pressed paper cone
- Aluminum bullet phase plug
- Oversized screw terminal
- 125 W RMS nominal power
- 150 Watt max / 300 Watt peak power
- Installation depth 71mm/2.79"
- Impedance 4 Ohm
- Include grilles



AMPLIFIER
SQL大功率功放



紅鑽系列 — MAGMA

Xcelsus Audio

卓越科技 · 美麗動聽

EXCELLENCE TECHNOLOGY
NATURAL SOUND



220.4AB

880W

AB類四聲道功率放大器
4 CHANNEL CLASS AB AMPLIFIER

MAGMA 220.4AB

- 4-channel
- 880 Watts total RMS power in bridge mode
- 4 x 220 Watts @ 2 Ohm CEA
- 4 x 150 Watts @ 4 Ohm CEA
- Subsonic & Low Pass Filters
- Overload & Short Circuit Protection



310.2AB

620W

AB類兩聲道功率放大器
2 CHANNEL CLASS AB AMPLIFIER

MAGMA 310.2AB

- 2-channel
- 620 Watts total RMS power in bridge mode
- 2 x 370 Watts @ 2 Ohm CEA
- 2 x 250 Watts @ 4 Ohm CEA
- Subsonic & Low Pass Filters
- Overload & Short Circuit Protection



3000.1D

3000W

D類單聲道功率放大器
MONO BLOCK CLASS D AMPLIFIER



紅鑽系列 — MAGMA

STEREO POWER AMPLIFIER



MAGMA 3000.1D

- 1-channel mono Hi-power amplifier
- 3000 Watts RMS power @ 1 Ohm load
- 1 x 2200 Watts @ 2 Ohm CEA
- 1 x 1400 Watts @ 4 Ohm CEA
- Variable Subsonic Filter 10-50 Hz
- Remote Sub Level Control
- Thermal Overload Protection

2200.1D

2200W

D類單聲道功率放大器 MONO BLOCK CLASS D AMPLIFIER

- 1-channel
- 2200 Watts RMS power @ 1 Ohm load
- 1 x 1500 Watts @ 2 Ohm CEA
- 1 x 900 Watts @ 4 Ohm CEA
- Variable Subsonic Filter 10-50 Hz
- Remote Sub Level Control
- Thermal Overload Protection



1600.1D

1600W

D類單聲道功率放大器 MONO BLOCK CLASS D AMPLIFIER

- 1-channel
- 1600 Watts RMS power @ 1 Ohm load
- 1 x 950 Watts @ 2 Ohm CEA
- 1 x 600 Watts @ 4 Ohm CEA
- Variable Subsonic Filter 10-50 Hz
- Remote Sub Level Control
- Thermal Overload Protection



XSS-12

12" SQL 超低音

SUBWOOFER



SQL SUBWOOFER

- 12" / 300mm non pressed paper cone
- High excursion rubber surround
- Aluminum diecast frame
- Linear drive precision motor construction
- 850 W RMS nominal power
- 1250 Watt max/ 1800 Watt peak power
- Installation depth 180mm/ 3.15"
- Dual 2 Ohm voice coils

紅鑽系列 — SOLIDUS

Hi-End

MIDRANGE & TWEETER

Hi-End SQ中、高音單元



銀鑽系列 — XCELSIA





XXM325

3" 競賽級中音喇叭

COMPETITION MIDRANGE

- 75MM / 3" Aluminium Cone
- Neodymium Motor System With Copper Cap
- SSS Technology (Spiderless Suspension System)
- Freq Range 100-10,000Hz
- Rec Amp Power 50-200 Watts
- Impedance 4 Ohms

XXT30W

高音喇叭

COMPETITION WAVEGUIDE TWEETER

- 30mm / 1.18" Nanoweave Textile Diaphragm
- Neodymium Motor System With Copper Cap
- Die-cast Aluminium Waveguide Housing
- Freq Range 1000-28000Hz
- Rec Amp Power 50-200 Watts
- 4 Ohm Impedance



銀鑽系列 — XCELSIA



XXT30

高音喇叭

COMPETITION TWEETER

- 30mm / 1.18" Nanoweave Textile Diaphragm
- Neodymium Motor System With Copper Cap
- Die-cast Aluminium Housing With Air Chamber
- Freq Range 1000-30000Hz
- Rec Amp Power 50-200Watts
- 4 Ohm Impedance

Hi-End

MIDBASS

Hi-End SQ中低音單元



銀鑽系列 — XCELSIA



XXM675

6.5" 競賽級中低音喇叭

6.5" COMPONENT MIDWOOFER

- 6.5" / 165mm Aluminium Dampened Cone
- 70mm Voice Coil With Integrated Cooling
- Neodymium Motor Design With Copper Cap
- Frequency Range 50-4250Hz (-3dB)
- Rec Amp Power 75-250 Watts
- 4 Ohm Impedance



XXM650

6.5" 競賽級中低音喇叭

6.5" COMPONENT MIDBASS

- 6.5" / 165mm Carbon / Glass Fiber Mix Cone
- 50mm Voice Coil With Integrated Cooling
- Linear Motor Design With Dual Copper Rings
- Frequency Range 45-4500Hz (-3dB)
- Rec Amp Power 75-250 Watts
- 4 Ohm Impedance



Hi-End

2-WAY COMPONENT

Hi-End SQ組合套裝



銀鑽系列 — XCELSIA

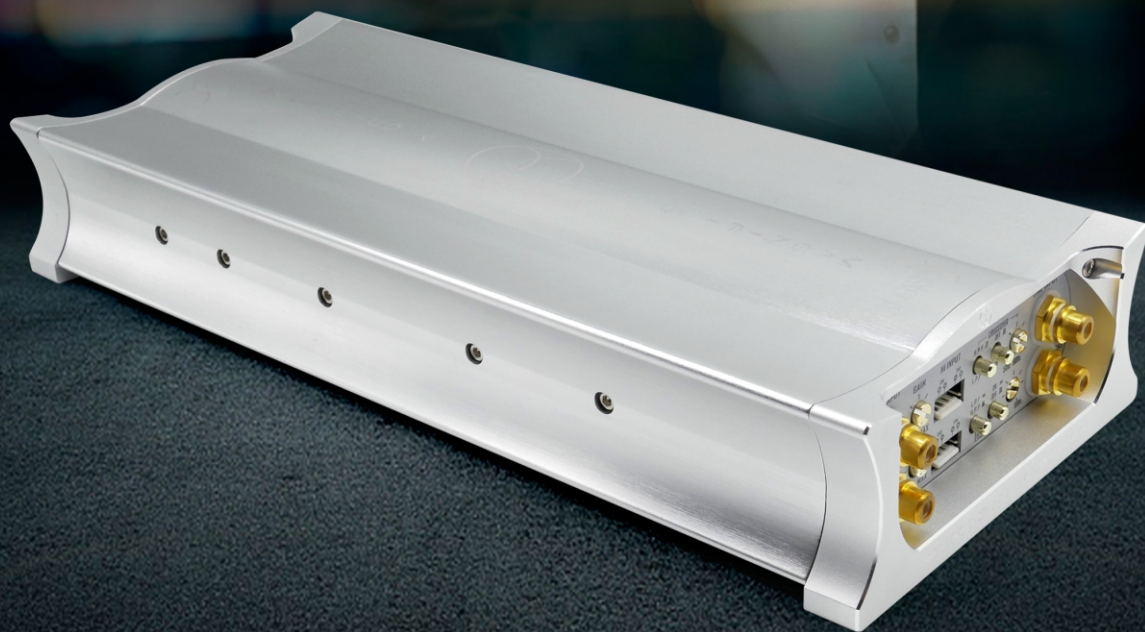
XX2

兩分頻分音器 (定制)

图片仅供参考，以实物为准

Hi-End AMPLIFIER

Hi-End SQ功放



銀鑽系列 — MAGNIFICO

POWER AMPLIFIER



MAGNIFICO 4

500W

AB類四聲道功率放大器

4 CHANNEL COMPETITION TUNED AMPLIFIER

- 4-Channel
- 500 Watts Total RMS Power Amplifier
- 4 x 150 Watts @ 2 Ohm CEA
- 4 X 80 Watts @ 4 Ohm CEA
- High Level Input With Auto Start
- High Pass & Low Pass Filters
- Overload & Short Circuit Protection



MAGNIFICO 1

1000W

D類單聲道功率放大器

MONO BLOCK COMPETITION TUNED AMPLIFIER

- 1-Channel
- 1000 Watts RMS Power @ 1 Ohm Load
- 1 x 700 Watts @ 2 Ohm CEA
- 1 X 450 Watts @ 4 Ohm CEA
- Subsonic Filter @ 25 Hz
- Remote Sub Level Control
- Thermal & Overload Protection



Hi-End SUBWOOFER

Hi-End SQ超低音



銀鑽系列 — XCELSIA

COMPETITION SUBWOOFER





XAS12

12" SQ超低音

SUBWOOFER

- 300mm / 12" Aluminium Cone
- Nominal impedance : 2 ohm
- Free air resonance: 35Hz
- Rec Power: 300~1200W
- Magnet structure: ferrite
- Output SPL: 89dB



XAS10

10" SQ超低音

SUBWOOFER

- 250mm / 10" Aluminium Cone
- Nominal impedance : 2 ohm
- Free air resonance: 40Hz
- Rec Power: 300~1000W
- Magnet structure: ferrite
- Output SPL: 87dB

XXS12

12" SQ 競賽超低音

SUBWOOFER

- 300mm / 12" Aluminium Cone
- 100mm / 3" 4 Layer Voice Coils
- Linear Drive System With Copper Ring & Cap
- Freq Range 15-2200 Hz
- Rec Amp Power 500-1500 Watts
- Dual 2 Ohm Impedance



XXS10

10" SQ 競賽超低音

SUBWOOFER

- 250mm / 10" Aluminium Cone
- 75mm / 3" 4 Layer Voice Coils
- Linear Drive system With Copper Ring & Cap
- Freq Range 25-2500 Hz
- Rec Amp Power 350-1000 Watts
- Dual 4 Ohm Impedance



瑞典·卓美



www.xcelsus.se

