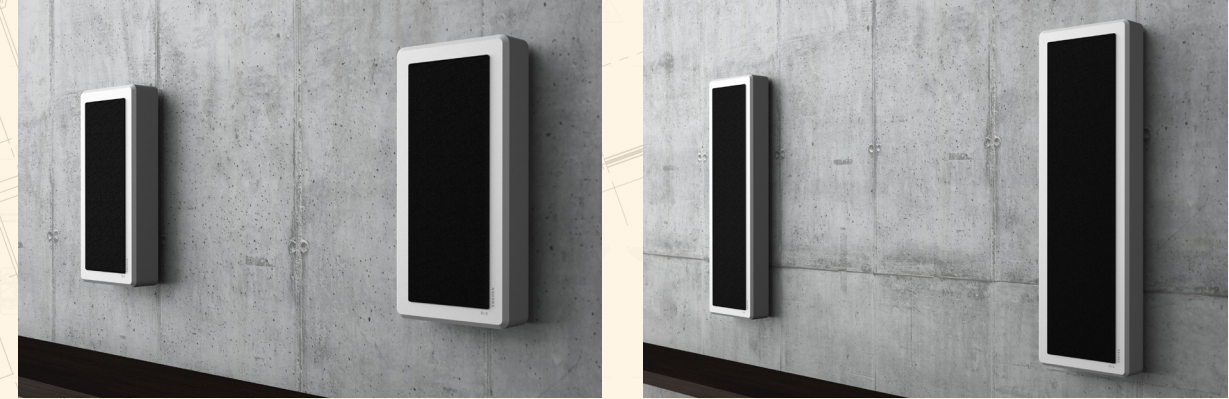


Flatbox M-Series

DLS Flatbox M-series is love at first sight. Never before have you seen anything like them mounted on a wall. Time alignment technology means mounting the tweeter and the mid/woofer drivers perfectly on the depth axis to let the sound reach your ear at exactly the same millisecond. But it was worth the entire 3247 hours designer Mats Andersen put into developing the M series.



Flatbox M-Series in detail:

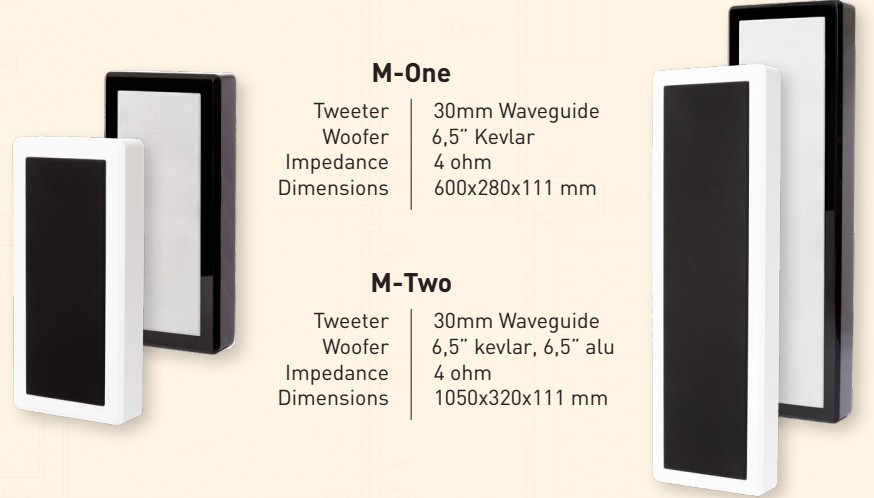


M-One

Tweeter | 30mm Waveguide
 Woofer | 6,5" Kevlar
 Impedance | 4 ohm
 Dimensions | 600x280x111 mm

M-Two

Tweeter | 30mm Waveguide
 Woofer | 6,5" kevlar, 6,5" alu
 Impedance | 4 ohm
 Dimensions | 1050x320x111 mm



Flatsub

The low bass can be what turns music or movies into a true-to-life experience. We know that from our experience in car audio design, where the bass is particularly hard to manage. Our active subwoofers have built-in amplifiers with large power reserves and are designed for speed and control. Easing them through the toughest bass lines and low-frequency special effects.

The subs come in two different colors: white silk and black high-gloss.



Flatsub 8.2

Woofer | 8"
 Amplifier | ClassD, 250 W
 Frequency | 25-200Hz
 Grille | White/black
 Dimensions | 300x465x171 mm



Flatsub Midi

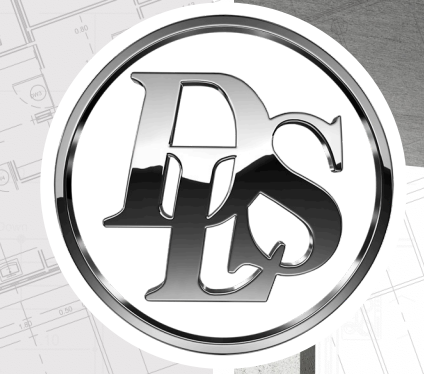
Woofer | 8"
 Amplifier | ClassD, 150 W
 Frequency | 25-200Hz
 Grille | White/black
 Dimensions | 445x400x172 mm

Outdoor speaker

DLS well sounding 2-way box speakers in two sizes that are weather resistance in ABS plastic. Perfect for the terrace or other public use indoors or outdoors. Delivered with grilles and bracket in aluminium and in black or white color.

MB5i/MB6i

Tweeter | 20/25 mm Soft dome
 Power handling | 80/110 W RMS
 Woofer size | 5"/6"
 Dimensions | 240x165x185/300x195x215 mm



info@dls.se
 www.dls.se



DLS Home Audio

DLS was founded in 1979 around an invention of a "state of the art" police radio receiver that could scan all frequencies. Already from the start the DLS choose to have exceptional build quality and the highest performance which since then has been a DLS signum.

HOME Audio

Learning from the Car Audios success, DLS started the 21st-century with expansion to Home Audio by teaming up with one of the most renowned Swedish speaker engineers. After some time, the unique Flatbox concept was born. Target of the designs is to achieve true HiFi sound from small, elegant wall speakers that fit the contemporary home without cluttering the floor with cables.

There are many highly appreciated Flatbox models, including active subwoofers, that enable you to experience your favorite music in full detail with unrivalled smoothness and clarity.

To complete the Home audio line DLS also offers a full program of in-ceiling, in-wall and weather resistant speakers that honor the DLS heritage with warm and rich sound.

*From all of us to all of you
- have a great sound!*

Flatbox Series

DLS Flatbox speakers come in many different sizes and two different colors: white silk and black high-gloss. All speakers come with two different colored grilles. White to blend in and black to enhance, letting you to place them on any wall, anywhere, adding a modern design element to your home, cafe or office.



Flatbox Mini

Tweeter	22 mm soft dome
Woofer	3" paper/wool cone
Impedance	8 ohm
Dimensions	240x240x92 mm



Flatbox Midi

Tweeter	30 mm soft dome
Woofer	4" paper/wool cone
Impedance	8 ohm
Dimensions	380x210x92 mm



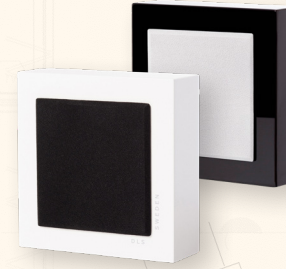
Flatbox XL

Tweeter	22 mm soft dome
Woofer	2 x 4" paper/wool cone
Impedance	4 ohm
Dimensions	630x220x92 mm



Flatbox XXL

Tweeter	30 mm soft dome
Woofer	1 x 4" + 2 x 4" bass/mid
Impedance	4 ohm
Dimensions	940x240x92 mm



Flatbox Slim Mini

Tweeter	-
Woofer	3"
Impedance	8 ohm
Dimensions	180x180x80 mm



Flatbox Slim Large

Tweeter	22 mm soft dome
Woofer	3" paper/wool cone
Impedance	8 ohm
Dimensions	470x170x80 mm



Flatbox Slim XL

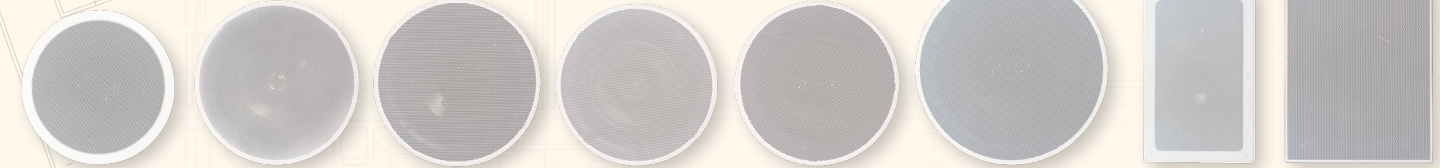
Tweeter	30 mm soft dome
Woofer	2 x 4" + 2 x 4" woofer/slaves
Impedance	4 ohm
Dimensions	1100x145x92 mm

In-Ceiling/In-Wall

DLS In-wall speakers are constructed from the same high-class components as used in our car hi-fi speakers. They are easy to install and you'll get excellent DLS sound wherever you want. Install a pair on each side of your screen, or as satellites behind you. Or let them provide a pleasant sound background in your kitchen or bathroom. You won't be disappointed! DLS In-wall speakers can also be used for sound in public places, such as in a supermarket or your office.



In-Ceiling/In-Wall in detail:



IC611

Woofer	6,5"
Tweeter	2x13 mm
Po Werhandling	60 W RMS
Impedance	4 ohm

IC621

Woofer	6,5"
Tweeter	16 mm
Po Werhandling	60 W RMS
Impedance	4 ohm

IC623

Woofer	6,5"
Tweeter	20 mm
Po Werhandling	55 W RMS
Impedance	4 ohm

IC624

Woofer	6,5"
Tweeter	28 mm
Po Werhandling	60 W RMS
Impedance	4 ohm

IC646

Woofer	6,5"
Tweeter	2x20 mm
Po Werhandling	60 W RMS
Impedance	4 ohm

IC824

Woofer	6,5"
Tweeter	2x20 mm
Po Werhandling	80 W RMS
Impedance	4 ohm

IW2.4

Woofer	4"
Tweeter	25 mm
Po Werhandling	60 W RMS
Impedance	4 ohm

IW2.6

Woofer	6,5"
Tweeter	28 mm
Po Werhandling	60 W RMS
Impedance	4 ohm