



**DLS PREMIUM AUDIO 2020**  
SPEAKERS . SUBWOOFERS . AMPLIFIERS





DLS was founded in 1979 with the creation of a state-of-the-art police radio receiver that could scan all frequencies. Even from this very first product, the company chose to have exceptional build quality and high performance as their trademarks – a tradition which continues to this day!

With sales of more than 100,000 police radio scanners by the mid-1980's, DLS was a well-known supplier to the growing 12 Volt market. Their love for music saw them collaborate with a number of innovative speaker manufacturers to release unique car audio products with sound geared toward fans of high quality audio.

When the Sound Quality competitions spread in Europe, DLS' speakers, with their characteristic warm and natural sound, were the preferred choice for many of the pro installers. They understood that closely supporting and monitoring these events was vital in order to refine products and get a good foundation for developing natural-sounding amplifiers.

Although still a small company, the staff at DLS are dedicated to their craft and have an endless passion for high quality audio which gives them the edge over the competition. The company has won numerous prizes and awards for their designs over the years including in IASCA / EMMA finals, and from industry-leading magazines and publications all over the globe.

As the future of car audio develops, DLS are proud to carry forward their innovative spirit after over forty years in the industry. As always, they will continue striving to produce the very best speakers and amplifiers to give listeners an incredible audio experience in their vehicles.

# about

# contact

DLS  
DLS Svenska AB  
P.O. Box 13029  
SE-402 51 Göteborg

Phone +46 31 840060  
Fax +46 31 844021  
E-mail [info@dls.se](mailto:info@dls.se)

AAMP Europe  
Sales  
Phone +44 (0)1384 958501  
E-mail [sales@connects2.com](mailto:sales@connects2.com)

AAMP Nordic  
Sales  
Phone +46 31 44 44 12  
E-mail [order@aamp.se](mailto:order@aamp.se)

# contents

## Amplifiers

- 5 P-Series
- 6 CCI-Series
- 8 DD-Series

## Speakers

- 9 Performance-Series
- 13 Reference-Series
- 17 Ultimate-Series
- 20 Scandinavia-Series

## 24 Subwoofers

## 28 Marine-Series

## 29 Outdoor-Series

## 30 Stinger

## 31 Wiring Kits

## 35 Interconnects

## 37 RoadKill

*Stinger*<sup>®</sup>

**DLS.SE**

# amplifiers

## DLS AMPLIFIER LINEUP

P10  
P20  
P40  
P44  
CCi2  
CCi4  
CCi44  
CCi500  
CC1000  
DD31T  
DD33-40

## P-Series

The P-Series range of amplifiers exemplify the trademark power and detail associated with a DLS sound system. Exquisitely tuned in England and engineered in Sweden, these Class A/B amps provide punchy bass, a dynamic midrange and rich treble notes with unrivalled presence.



### P10

**Class A/B Amplifier**  
**Channels 1**

**Watt/Ohm** 1x450W/2Ω

**Dimensions** 320x188x55mm

#### Why choose this amplifier?

Ideal for subwoofers - includes built-in low pass filter, bass boost switch and remote bass level control.



Recommended Product | **SK4641** - 4GA Complete Amplifier Wiring Kit, for car audio systems up to 1500 Watts



### P20

**Class A/B Amplifier**  
**Channels 2**

**Watt/Ohm** 2x100W/2Ω

**Dimensions** 210x188x55mm

#### Why choose this amplifier?

Perfect for use in vehicles with two main speakers. Small footprint and easy to integrate with factory-installed head units.



Recommended Product | **SK4681** - 8GA Complete Amplifier Wiring Kit, car audio systems up to 600 Watts or 60 Amps

### P40

**Class A/B Amplifier**  
**Channels 4**

**Watt/Ohm** 4x100W/2Ω

**Dimensions** 320x188x55mm

#### Why choose this amplifier?

Versatile, powerful and sleek solution for up to four speakers, or a combination of speakers and a subwoofer.



Recommended Products | **SK4681** - 8GA Complete Amplifier Wiring Kit  
**SI4217** - 2 Channel Directional Twisted Pair Interconnect 17Ft/5.2M

### P44

**Class A/B Amplifier**  
**Channels 4**

**Watt/Ohm** 4x140W/2Ω

**Dimensions** 400x188x55mm

#### Why choose this amplifier?

Get the versatility of four channels with our maximum power output. The P44 provides raw power to fuel your whole system.



Recommended Products | **SK4641** - 4GA Complete Amplifier Wiring Kit  
**SI4217** - 2 Channel Directional Twisted Pair Interconnect 17Ft/5.2M

## CCi-Series

An improved version of the classic CC range, our CCi amplifiers have been designed to provide a powerful and incredibly clean sound in a small footprint and at an affordable price point.

TUNED BY

*Gordon T.*

GORDON TAYLOR

### CCi500

**Class D Amplifier**

**Channels 1**

**Watt/Ohm** 1x550W/1Ω

**Dimensions** 320x129x54mm

#### Why choose this amplifier?

Install a subwoofer and get all the power you need in a small package. Tuned by Gordon Taylor for unparalleled bass tone and clarity.

*Stinger*

Recommended Product | **SK6681** -  
8GA Complete Amplifier Wiring Kit  
for car audio systems up to 800 Watts  
or 70 Amps



### CC1000

**Class D Amplifier**

**Channels 1**

**Watt/Ohm** 1x1100W/1Ω

**Dimensions** 370x129x54mm

#### Why choose this amplifier?

Tap into your system's raw power with this 1100W amplifier, featuring the same exceptional sound of our CCi500 but with even more bass for the biggest subs.

*Stinger*

Recommended Product | **SK6641** -  
4GA Complete Amplifier Wiring Kit  
for car audio systems up to 1750 Watts  
or 175 Amps



## Why choose these amplifiers?

Get a warm midrange, glimmering top-end details and tight bass in a small package with our CCI Class A/B amplifiers, tuned by Gordon Taylor. With our optimised power supply section, this series is capable of producing huge power ratings with less energy lost as heat to truly maximise your system's potential.



### CCI2

**Class AB Amplifier**  
**Channels 2**

**Watt/Ohm** 2x170W/2Ω

**Dimensions** 260x129x54mm



Recommended Product | **SK6681**  
- 8GA Complete Amplifier Wiring  
Kit for car audio systems up to  
800 Watts



### CCI4

**Class AB Amplifier**  
**Channels 4**

**Watt/Ohm** 4x70W/2Ω

**Dimensions** 260x129x54mm



Recommended Product | **SK6681**  
- 8GA Complete Amplifier Wiring  
Kit **SI6217** - 2 Channel Directional  
Shielded



### CCI44

**Class AB Amplifier**  
**Channels 4**

**Watt/Ohm** 4x130W/2Ω

**Dimensions** 400x188x55mm



Recommended Product | **SK6681**  
- 8GA Complete Amplifier Wiring Kit  
**SI6217** - 2 Channel Directional  
Shielded Interconnect 17FT/5.2M

## LAUNCHING 2020

## Signature Series AMPLIFIERS



The new  
**Signature Series** from DLS  
arrives soon designed for the true  
Audiophile! Built using the foundations of our  
classic CCI Series, the new range will take things  
even further to provide more power and an even more  
articulate and detailed sound courtesy of tuning expert,  
Gordon Taylor.

### Features include\*:

- Preamp Bypass allowing the amplifier to be completely controlled by the DSP, improving channel balance, gain matching and elimination colouration from the preamp stage
- Upgraded Roll Capacitors for tighter bass and improved dynamics
- High Level Output Stage Biasing for an even warmer and detailed sound character
- Upgraded Preamp Chips ensures more transparent SQ

\*Note - final feature set is subject to change

### S2

**Class AB Amplifier**  
**Channels 2**

**Watt/Ohm** 2x170W/2Ω

**Dimensions** 260x129x54mm

### S4

**Class AB Amplifier**  
**Channels 4**

**Watt/Ohm** 4x130W/2Ω

**Dimensions** 320x129x54mm

### S1

**Class D Amplifier**  
**Channels 1**

**Watt/Ohm** 1x1200W/2Ω

**Dimensions** 370x129x54mm

DESIGNED BY  
**GORDON TAYLOR**



**Why choose these amplifiers?**

When space is at a premium, choose a DD Series amplifier to provide the optimum power output to your system and achieve a balanced, dynamic sound to three channels.

**DD33-40**


**Class D Amplifier**  
**Channels** 3  
**Watt/Ohm** 2x95W + 1x300W/2Ω  
**Dimensions** 215x103x35mm

**DD31T**

**Class D Amplifier**  
**Channels** 3  
**Watt/Ohm** 2x125W + 1x350W/2Ω  
**Dimensions** 215x103x35mm

**24 Volt for Trucks**

The perfect amplifier for installation in trucks, buses and RVs with 24 Volt system voltage requirements



Recommended Product | **SK6681** -  
8GA Complete Amplifier Wiring Kit  
**SI6217** - 2 Channel Directional Shielded  
Interconnect 17ft/5.2M

# performance

## DLS PERFORMANCE LINEUP

M225  
M226  
M369  
M3710i  
M524  
M526i  
M6.2i  
MB6.2  
MC6.2  
MK6.2



## Performance Series

Quality materials, expert craftsmanship and years of sound design come together in the Performance Series range – a selection of coaxial speakers, 2-way component kits, 6x9s and subwoofers that provide the trademark DLS audiophile sound in an affordable package. Get more for less and achieve an upgrade that satisfies even the most hardcore music enthusiast with the Performance Series.

*Stinger*

### Discover Pure Sound

When buying DLS Performance products, we recommend using Stinger's range of installation accessories including cable, wiring kits, connectors and interconnects to achieve the highest quality installation possible and maximise the effectiveness of each component in your system.

### Eliminate Noise



We recommend the Stinger RoadKill range of sound damping material to improve the overall audio frequency response and bass input possible in the vehicle.

Our range of Fast Rings increase speaker output, improve audio projection and help you to get the most out of your system's sound with one, simple installation.



### M225

#### Coaxial Speakers

**Woofer** 5.25" / 130mm

**Tweeter** 16mm Mylar

**Power Handling** 50W RMS / 75W Max

**Impedance** 4Ω

#### Why choose these speakers?

Powerful two-way coaxial kit with excellent tonal balance. Extremely shallow mounting depth (43mm) for versatile installation.



### M226

#### Coaxial Speakers

**Woofer** 6.5" / 165mm

**Tweeter** 16mm Mylar

**Power Handling** 50W RMS / 75W Max

**Impedance** 4Ω

#### Why choose these speakers?

All the benefits of our M225 but with a larger 6.5" speaker for added bass response and presence.



### M369

#### Coaxial Speakers

**Woofer** 6x9" / 156mm x 236mm

**Midrange** 2" / 45mm

**Tweeter** 20mm Soft Dome

**Power Handling** 80W RMS / 120W Max

**Impedance** 4Ω

#### Why choose these speakers?

For a superbly balanced sound, our M369 provides a bass driver, mid driver and tweeter, along with external 6dB and 12dB crossovers to capture all the details of your music.

### M3710i

#### Coaxial Speakers

**Woofer** 7x10" / 180mm x 250mm

**Midrange** 1" / 25mm

**Tweeter** 20mm Soft Dome

**Power Handling** 120W RMS / 200W Max

**Impedance** 4Ω

#### Why choose these speakers?

For the perfect balance between raw power and tonal quality, our M3710i are oversized 7x10"s for use in 6x9" locations. Includes an external 6dB crossover for crystal clear sound. Ideal for classic cars!





## M524

### Coaxial Speakers

**Woofer** 4" / 100mm

**Tweeter** 20mm Soft Dome

**Power Handling** 60W RMS / 90W Max

**Impedance** 4Ω

#### Why choose these speakers?

A pair of well-balanced 4" speakers with external crossover to guarantee a high-quality sound in any installation. Excellent bass for a 4" speaker!



## M526i

### Coaxial Speakers

**Woofer** 6.5" / 165mm

**Tweeter** 20mm Soft Dome

**Power Handling** 50W RMS / 75W Max

**Impedance** 4Ω

#### Why choose these speakers?

When space is at a premium, these speakers provide unparalleled sound quality with a mounting depth of just 45mm. Each pair features a hybrid magnet and high-quality external crossover for perfect balance and clarity.



## M6.2i

### Component Speakers

**Woofer** 6.5" / 165mm

**Tweeter** 25mm Soft Dome

**Power Handling** 60W RMS / 80W Max

**Impedance** 4Ω

#### Why choose these speakers?

Upgrade your OEM system and achieve a powerful sound with this kit, featuring external tweeters to mount in the optimal locations in your vehicle, plus a 12dB crossover and high-quality bass driver for a well-rounded and complex sound.



## MB6.2

### Component Speakers

**Woofer** 6.5" / 165mm

**Tweeter** 25mm Soft Dome

**Power Handling** 80W RMS / 100W Max

**Impedance** 4Ω

#### Why choose these speakers?

The MB6.2 represents exceptional value at its price point, with an external 12dB crossover with woofer bypass and tweeter level select for more control over your sound. Ideal for a powerful and affordable OEM upgrade.



## MC6.2

### Component Speakers

**Woofer** 6.5" / 165mm

**Tweeter** 25mm Soft Dome

**Power Handling** 80W RMS / 100W Max

**Impedance** 4Ω

### Why choose these speakers?

Powerful, clear-sounding, fibreglass woofer for deep bass, and 25mm dome tweeter for crisp highs. Features our high quality external crossover with tweeter level select for supreme sound balance.

**P O W E R F U L  
DEEP BASS**



## MK6.2

### Component Speakers

**Woofer** 6.5" / 165mm

**Tweeter** 16mm Mylar

**Power Handling** 55W RMS / 70W Max

**Impedance** 4Ω

### Why choose these speakers?

Get an incredible boost to your system when installing these versatile 6.5" speakers, featuring papercone woofers and compact, external mylar tweeters for installation in your desired location. Perfect for an OEM upgrade!

# reference

## DLS REFERENCE LINEUP

RC4.2  
RC6.2Q  
RC6.3Q-40  
RCS5.2  
RCS6.2i  
RZ6.2Q  
RC25  
RC50



Reference  
Series

For music lovers, we know that detail is everything. Our Reference Series speakers have been designed by audiophiles to provide the most accurate and detailed replication of your music, no matter what style or genre you choose. These speakers truly capture the soul of each song, with rich and powerful bass tones, embracing midrange and crystal-clear treble allowing your music to come to life.



Discover Pure Sound

When buying DLS Reference products, we recommend using Stinger's range of installation accessories including cable, wiring kits, connectors and interconnects to achieve the highest quality installation possible and maximise the effectiveness of each component in your system.



Eliminate Noise

We recommend the Stinger RoadKill range of sound damping material to improve the overall audio frequency response and bass input possible in the vehicle.

Our range of Fast Rings increase speaker output, improve audio projection and help you to get the most out of your system's sound with one, simple installation.



RC4.2

Component Speakers

Woofer 4" / 100mm

Tweeter 25mm Silk Dome

Power Handling 60W RMS / 100W Max

Impedance 4Ω

Why choose these speakers?

Powerful 4" kit with 80mm magnet, smooth-sounding 25mm silk dome tweeter and high quality external crossover with tweeter level select.



RCS5.2

Component Speakers

Woofer 5,25" / 130mm

Tweeter 25mm Silk Dome

Power Handling 50W RMS / 90W Max

Impedance 4Ω

Why choose these speakers?

Gain all the benefits of our Performance Series, including silk dome tweeter and fibre glass cone, with this 5.25" speaker kit designed to fit into extremely shallow locations (43mm).



RCS6.2i

Component Speakers

Woofer 6,5" / 165mm

Tweeter 25mm Silk Dome

Power Handling 50W RMS / 90W Max

Impedance 4Ω

Why choose these speakers?

Our 6.5" kit has been designed to give you the most detailed, clear sound possible through its fibre glass cone, rubber surround and external tweeters.

## "WORLDS BEST CAR SPEAKER KIT"



# POWERFUL HYBRID ALUMINIUM WOOFER



### RC6.2Q

#### Component Speakers

**Woofer** 6.5" / 165mm

**Tweeter** 28mm Silk Dome

**Power Handling** 100W RMS / 150W Max

**Impedance** 4Ω

#### Why choose these speakers?

When looking for extreme power and performance, our RC6.2Q component speakers are the perfect option. The kit features hybrid aluminum woofers with rigid PENTA baskets, 28mm silk dome tweeters and low ESR crossovers for the ultimate sound system upgrade.

### RC-6.3Q-40

#### Component Speakers

**Woofer** 6.5" / 165mm

**Midrange** 2.5" / 63mm

**Tweeter** 25mm Silk Dome

**Power Handling** 100W RMS / 150W Max

**Impedance** 4Ω

#### Why choose these speakers?

An upgraded 3-way variant of our popular RC6.2Q, this kit features a 6.5" hybrid aluminium woofers, 2.5" midrange drivers with acoustic resonance chambers and 25mm tweeters for a versatile and premium upgrade to your system.





**POWERFUL  
HYBRID  
ALUMINIUM  
WOOFER**

## RZ6.2Q

### Component Speakers

**Woofer** 6,5" / 165mm

**Tweeter** 50mm Wide Band

**Power Handling** 100W RMS / 150W Max

**Impedance** 4Ω

### Why choose these speakers?

Harness massive power and create a dynamic soundstage with this component speaker kit, featuring a rigid PENTA basket design housing our hybrid aluminium bass driver and 50mm wide band external tweeters with low crossover frequency.



## RC25

### Tweeter

**Tweeter** 25mm Silk dome

**Power Handling** 50W RMS / 80W Max

**Impedance** 4Ω

### Why choose these speakers?

Boost your system's top end with our high quality, low distortion 25mm tweeter, featuring an external 4Khz crossover and mounting options for angled or recessed installations.



## RC50

### Tweeter

**Tweeter** 50mm Wide Band

**Power Handling** 50W RMS / 80W Max

**Impedance** 4Ω

### Why choose these speakers?

Take your soundstage to the next level with our 50mm tweeters, designed to be axis mounted for wide sound dispersion and featuring low crossover frequency and resonance chamber design.

DLS ULTIMATE LINEUP

UP14

UP16

UP136

ultimate





## Discover Pure Sound

When buying DLS Ultimate products, we recommend using Stinger's range of installation accessories including cable, wiring kits, connectors and interconnects to achieve the highest quality installation possible and maximise the effectiveness of each component in your system.



## Eliminate Noise

We recommend the Stinger RoadKill range of sound damping material to improve the overall audio frequency response and bass input possible in the vehicle.

Our range of Fast Rings increase speaker output, improve audio projection and help you to get the most out of your system's sound with one, simple installation.



## UPi4

### 2-Way Component Speakers

**Woofer** 4" / 100mm

**Tweeter** 25mm Silk Dome

**Power Handling** 80W RMS / 160W Max

**Impedance** 4Ω

### Why choose these speakers?

Achieve the ultimate in performance with this 4" kit, featuring the highest quality materials and technology available. The woofer features a Neodymium Kevlar cone for incredible bass response and a 25mm silk dome tweeter with crossover for glistening highs. Designed to fit seamlessly into BMW vehicles.



## UPi6

### 2-Way Component Speakers

**Woofer** 6.5" / 165mm

**Tweeter** 28mm Silk Dome

**Power Handling** 120W RMS / 200W Max

**Impedance** 4Ω

### Why choose these speakers?

The 6.5" entry in our Ultimate Series range packs a serious punch, with an aluminium cone, powerful Neodymium magnet for controlled bass response and separate 28mm tweeters with copper rings for even better highs. The kit also includes our Ultimate 2-way crossover, made with the highest quality components, to ensure that the speakers present each frequency range as efficiently as possible.



# POWERFUL BASS ADVANCED CROSSOVER

## UPI36

### Component Speakers

**Woofer** 6.5" / 165mm

**Midrange** 2.5" / 63mm

**Tweeter** 25mm Silk Dome

**Power Handling** 120W RMS / 200W Max

**Impedance** 4Ω

### Why choose these speakers?

The 3-way addition to the Ultimate Series range provides an aluminium woofer with powerful neodymium magnet, 2.5" midrange driver with acoustic chamber and 25mm silk dome tweeter for a complex and detailed sonic experience you'll never forget.

## BMWUPI6

### BMW Subwoofer Kit

**Woofer** 6.5" / 165mm

**Power Handling** 120W RMS / 200W Max

**Impedance** 4Ω

### Why choose these speakers?

The Kit contains two 6.5" subwoofer drivers each mounted in a pre-tuned frame, marked left and right hand for underseat fitment.

The subwoofers were designed as direct bolt-in replacements for the original factory fitted units, but with a greatly improved bass output.



# scandinavia

## DLS SCANDINAVIA LINEUP

SCANDINAVIA 30  
SCANDINAVIA 75  
SCANDINAVIA 165  
SCANDINAVIA 165WI  
SCANDCASE 2  
SCANDCASE 3  
SCANDCASE 3 - 40





### Discover Pure Sound

When buying DLS Scandinavia products, we recommend using Stinger's range of installation accessories including cable, wiring kits, connectors and interconnects to achieve the highest quality installation possible and maximise the effectiveness of each component in your system.



### Eliminate Noise

We recommend the Stinger RoadKill range of sound damping material to improve the overall audio frequency response and bass input possible in the vehicle.

Our range of Fast Rings increase speaker output, improve audio projection and help you to get the most out of your system's sound with one, simple installation.



## Scandinavia Series

The brand new DLS Scandinavia Series is our newest high-end speaker range, designed for competition use or for those who have extremely high demands for the sound quality of their car audio system.

## SCANDINAVIA 30

### Tweeter

**Tweeter** 30mm Silk dome

**Power Handling** 50W RMS / 200W Max

**Impedance** 4Ω

### Why choose these speakers?

Experience extreme top-end performance with a transparent and crystal clear sound. Incredible imaging and staging capabilities with high resolution and dynamics to capture even the smallest details.



# COMPETITION GRADE

SPECIALLY DESIGNED FOR COMPETITION USE. EXTREME AUDIO PERFORMANCE FOR PROFESSIONAL INSTALLATIONS.



## SCANDINAVIA 75

### Midrange

**Midrange** 3" / 75mm

**Power Handling** 50W RMS / 200W Max

**Impedance** 4Ω

### Why choose these speakers?

Our most premium midrange speaker, featuring an extremely wide frequency range to bring the entire spectrum of mids into the mix. This speaker has been designed to perfectly reproduce the resolution and dynamics of the music to create an experience rich in detail and presence.

## SCANDINAVIA 165

**Bass Driver**

**Woofer 6,5" / 165mm**

**Power Handling 50W RMS / 200W Max**

**Impedance 4Ω**

### Why choose these speakers?

Ideal to provide midbass in 2-way configurations, the Scandinavia 165 features a fibreglass cone body and provides an extremely powerful, bass-driven sound with low distortion and flawless dynamics.



**COMPETITION  
GRADE**

**EXTREME  
AUDIO  
PERFORMANCE**



## SCANDINAVIA 165Wi

**Bass Driver**

**Woofer 6,5" / 165mm**

**Power Handling 50W RMS / 200W Max**

**Impedance 4Ω**

### Why choose these speakers?

Get competition-grade midbass with this vented alucone woofer, featuring a symmetrical magnet structure, high excursion surround and flat linear cone spider for exquisite midbass transient response.



## SCANDCASE 2

**2-Way System - Luxury Aluminum Case**

**Woofers** 6.5" / 165mm

**Tweeter** 30mm Soft Dome

**Power Handling** 50W RMS / 200W Max

**Impedance** 4Ω

### Why choose these speakers?

Travel in style with this high-quality aluminium case including a foam insert to house our 2-way Scandinavia 165 speakers, Scandinavia 30 tweeters and high-grade component passive crossover.



## SCANDCASE 3

**3-Way System - Luxury Aluminum Case**

**Woofers** 6.5" / 165mm

**Midrange** 3" / 75mm

**Tweeter** 30mm Soft Dome

**Power Handling** 50W RMS / 200W Max

**Impedance** 4Ω

### Why choose these speakers?

Our luxury aluminium case, including a three-part kit with our Scandinavia 165W bass drivers, Scandinavia 75 mid drivers and Scandinavia 30 tweeters, plus high grade component 'semi active' crossover.



## DLS SUBWOOFER LINEUP

MCW10

MCW12

NORDICA10I

NORDICA12I

ACW10

# subwoofers

## MCW10

**Performance Subwoofer**

**Woofer** 10" / 250mm

**Power Handling** 200W RMS / 400W Max

**Impedance** 4Ω

### Why choose these subwoofers?

Our Performance Series subwoofers give you the bass boost you need at an affordable price point. Available in both 10" and 12" variants, these subs are lightweight with a papercone design to maximise bass response.

## MCW12

**Performance Subwoofer**

**Woofer** 12" / 300mm

**Power Handling** 250W RMS / 500W Max

**Impedance** 4Ω

**SUPER  
NATURAL  
BASS**

## Nordica10i

**Ultimate SQ Subwoofer**

**Woofer 10" / 250mm**

**Power Handling 300W RMS / 600W Max**

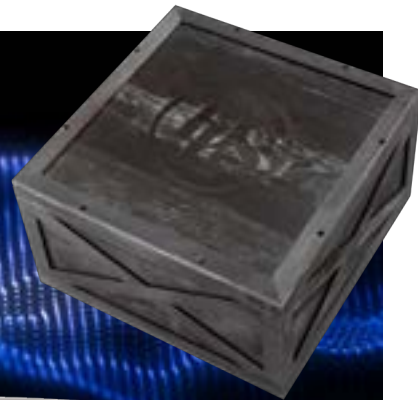
**Impedance 4Ω**

### Why choose these subwoofers?

Get massive, weaponised bass from our Nordica woofers, available in 10" or 12" variants. Each woofer provides a competition-grade bass sound through its symmetrical magnet structure, custom die-cast bracket and aluminium cone body. The subs come ready for war in a bespoke 'ammo' design crate.



**TRUE SQ  
COMPETITION  
SUBWOOFERS**



## Nordica12i

**Ultimate SQ Subwoofer**

**Woofer 12" / 300mm**

**Power Handling 300W RMS / 800W Max**

**Impedance 4Ω**

## ACW10

**10" Active Subwoofer**

**Woofers** 10" / 250mm

**Channels** 1

**Class** D Amplifier

**Watt / Ohm** 1x450W / 2Ω

**Dimensions** 345 x 245 x 65mm

- Remote External Bass Controller
- Durable Aluminium Enclosure

### Why choose this subwoofer?

Cutting-edge Class D amplifier technology meets innovative design to create the best sounding underseat subwoofer currently available on the market. The DLS ACW10 produces an incredible amount of bass and can be installed in the tightest of spaces.



Recommended Products | **SK4641** -  
4GA Complete Amplifier Wiring Kit  
**SI4217** - 2 Channel Directional Twisted  
Pair Interconnect 17FT/5.2M

**THE BEST SOUNDING  
UNDERSEAT  
SUBWOOFER  
ON THE MARKET**



# Marine Series

The DLS Marine Series expands with a new waterproof amplifier and speakers that are the result of our continued efforts to supply the best sound available. Exquisitely tuned in England and with a balanced, powerful sound, this range is ideal for installation into marine applications for a considerable audio upgrade.

## DLS MARINE LINEUP

MARINE225i  
MARINE226i  
M40



### MARINE 225i

#### Marine Speakers

**Woofer** 5.25" / 130mm

**Tweeter** 16mm Mylar

**Power Handling** 60W RMS / 100W Max  
**Impedance** 4Ω

#### Why choose these speakers?

White, IP65 grade waterproof speaker with UV resistant aluminium high-flow grille for a punchy and reliable sound upgrade in marine applications.



### MARINE 226i

#### Marine Speakers

**Woofer** 6.5" / 165mm

**Tweeter** 16mm Mylar

**Power Handling** 60W RMS / 100W Max  
**Impedance** 4Ω

#### Why choose these speakers?

All the benefits of our 5.25" speaker but with a larger 6.5" woofer for a larger sound. Rated IP65 waterproof to ensure excellent performance in all weather conditions.



### MARINE M40

#### Marine AB Class Amplifier

**Channels** 4

**Watt/Ohm** 4x150W/2Ω

**Dimensions** 320x188x55mm

#### Why choose these speakers?

Our amplifier designed especially for marine applications, featuring rubber-protected terminals and a dynamic, warm sound with HLC and 6dB/12dB bass EQ.

# Outdoor Series

Take your sound system with you wherever you are with our range of high-quality speakers for use at home or when travelling. Each speaker has been made with a durable, weatherproof construction to protect it for outdoor use, and includes an aluminium bracket for versatile mounting.

## DLS OUTDOOR LINEUP

MB5i WHITE  
MB5i BLACK  
MB6i WHITE  
MB6i BLACK



### MB5i White

#### 2-Way All-Weather Multibox Speaker

**Woofer** 5,25" / 130mm

**Tweeter** 20mm Soft Dome

**Power Handling** 80W RMS / 160W Max

**Impedance** 4Ω

#### Why choose these speakers?

A perfect, portable sound solution, featuring a 5.23" woofer and 20mm soft dome tweeter with a warm, balanced sound ideal for outdoor or indoor use.



### MB5i Black

#### 2-Way All-Weather Multibox Speaker

**Woofer** 5,25" / 130mm

**Tweeter** 20mm Soft Dome

**Power Handling** 80W RMS / 160W Max

**Impedance** 4Ω

#### Why choose these speakers?

All the great features of the MB5i White, but finished in black.



### MB6i White

#### 2-Way All-Weather Multibox Speaker

**Woofer** 6,5" / 165mm

**Tweeter** 25mm Soft Dome

**Power Handling** 110W RMS / 220W Max

**Impedance** 4Ω

#### Why choose these speakers?

A versatile speaker with a 6.5" woofer for a larger sound with enhanced presence. Features a 25mm soft dome tweeter and more power – ideal for use at events or in larger open spaces.



### MB6i Black

#### 2-Way All-Weather Multibox Speaker

**Woofer** 6,5" / 165mm

**Tweeter** 25mm Soft Dome

**Power Handling** 110W RMS / 220W Max

**Impedance** 4Ω

#### Why choose these speakers?

All the great features of the MB6i White, but finished in black.

# Outdoor

# Stinger

## DISCOVER PURE SOUND

Stinger provides premium interconnects, amplifier wiring kits, superior power support, high performance batteries and car audio accessories to upgrade a vehicles sound system.

Stinger is designed and engineered to achieve the highest performance from audio components, for precision sound reproduction making it the ideal product to team with DLS audio.

# Stinger RoadKill

## ELIMINATES NOISE

Stinger RoadKill reduces a massive amount of unwanted resonating noise (panel vibrations, road noise, exhaust, engine noise & vibration) allowing your audio system to sound even louder and with more clarity and definition. The RoadKill Fast Rings kit increases speaker output, improves the projection of the audio into the car cabin and reduces unwanted rear reflections that can degrade the sound.



## HIGH PERFORMANCE

### THE STINGER LINEUP

- INTERCONNECTS
- POWER & SPEAKER CABLE
- AMPLIFIER WIRING KITS
- BATTERIES
- INSTALLATION ACCESSORIES

### THE ROADKILL LINEUP

SOUND DAMPING

FAST RINGS



Better Sound



Easy to Install



Excellent Insulation



Safety

Stinger is a Power Brand of AAMP Global.

[stingerelectronics.com](http://stingerelectronics.com)

Available in Power and Complete (power + signal) Kits, Stinger's 6000 Series Wiring kits have all the essentials for a professional installation. Featuring 100% oxygen-free tinned copper for a pure, uninterrupted transfer of power. Tru-spec cables/wires meet or exceed the industry standard of copper required for the gauge size.

## SK6201

### 1/0GA Power Wiring Kit

DESIGNED SPECIFICALLY FOR CAR AUDIO SYSTEMS UP TO 4000 WATTS OR 300 AMP



#### Kit Includes:

- 18ft./5.5m Matte Blue Hyper-Twist 1/0GA Power Wire
- 3ft./0.9m Matte Clear Hyper-Twist 1/0GA Ground Wire
- 17ft./5.2m Matte Blue 18GA Remote Turn-On Wire
- SHD201 Water-Resistant ANL Fuse-Holder
- 300 Amp Shoc-Krome ANL Fuse
- 1/0GA Crimp Ring Terminals Pre-Installed
- Stinger Metal Installation Badge
- 16GA Blue Butt Connector
- 1/0GA Snap-In Protective Firewall Grommet
- Self-Drilling Mounting Screws
- (10) 7"/17.8cm Wire Ties

## SK6241

### 4GA Power Wiring Kit

DESIGNED SPECIFICALLY FOR CAR AUDIO SYSTEMS UP TO 1750 WATTS OR 175 AMP



#### Kit Includes:

- 18ft./5.5m Matte Blue Hyper-Twist 4GA Power Wire
- 3ft./0.9m Matte Clear Hyper-Twist 4GA Ground Wire
- 17ft./5.2m Matte Blue 18GA Remote Turn-On Wire
- SHD801 Water-Resistant Mini-ANL (MIDI) Fuse-Holder
- 175 Amp Shoc-Krome Mini-ANL (MIDI) Fuse
- 4GA Crimp Ring Terminals Pre-Installed
- Stinger Metal Installation Badge
- 16GA Blue Butt Connector
- 4GA Snap-In Protective Firewall Grommet
- Self-Drilling Mounting Screws
- (10) 7"/17.8cm Wire Ties

## SK6281

### 8GA Power Wiring Kit

DESIGNED SPECIFICALLY FOR CAR AUDIO SYSTEMS UP TO 800 WATTS OR 70 AMP



#### Kit Includes:

- 18ft./5.5m Matte Blue Hyper-Twist 8GA Power Wire
- 3ft./0.9m Matte Clear Hyper-Twist 8GA Ground Wire
- 17ft./5.2m Matte Blue 18GA Remote Turn-On Wire
- SHD801 Water-Resistant Mini-ANL (MIDI) Fuse-Holder
- 70 Amp Shoc-Krome Mini-ANL (MIDI) Fuse
- 8GA Crimp Ring Terminals Pre-Installed
- Stinger Metal Installation Badge
- 16GA Blue Butt Connector

### Complete Wiring Kits: Power & Signal

#### SK6641

##### 4GA Complete Wiring Kit (power + signal + speaker wire)

DESIGNED SPECIFICALLY FOR CAR AUDIO SYSTEMS UP TO 1750 WATTS OR 175 AMPS



##### Kit Includes:

- 18ft./5.5m Matte Blue Hyper-Twist 4GA Power Wire
- 3ft./0.9m Matte Clear Hyper-Twist 4GA Ground Wire
- 17ft./5.2m Matte Blue 18GA Remote Turn-On Wire
- (1) 17ft./5.2m 6000 Series 2-Channel Audio Interconnect (SI6217)
- 30ft./9.1m Matte Blue Hyper-Twist 16 Gauge Speaker Wire
- SHD801 Water-Resistant Mini-ANL (MIDI) Fuse-Holder
- 175 Amp Shac-Krome Mini-ANL (MIDI) Fuse
- 4GA Crimp Ring Terminals Pre-Installed
- Stinger Metal Installation Badge
- 16GA Blue Butt Connector
- 4GA Snap-In Protective Firewall Grommet
- Self-Drilling Mounting Screws
- (10) 7"/17.8cm Wire Ties

#### SK6681

##### 8GA Complete Wiring Kit (power + signal + speaker wire)

DESIGNED SPECIFICALLY FOR CAR AUDIO SYSTEMS UP TO 800 WATTS OR 70 AMPS



##### Kit Includes:

- 18ft./5.5m Matte Blue Hyper-Twist 8GA Power Wire
- 3ft./0.9m Matte Clear Hyper-Twist 8GA Ground Wire
- 17ft./5.2m Matte Blue 18GA Remote Turn-On Wire
- (1) 17ft./5.2m 6000 Series 2-Channel Audio Interconnect (SI6217)
- SHD801 Water-Resistant Mini-ANL (MIDI) Fuse-Holder
- 70 Amp Shac-Krome Mini-ANL (MIDI) Fuse
- 8GA Crimp Ring Terminals Pre-Installed
- Stinger Metal Installation Badge
- 16GA Blue Butt Connector
- 8GA Snap-In Protective Firewall Grommet
- Self-Drilling Mounting Screws
- (10) 7"/17.8cm Wire Ties

Available in Power and Complete (power + signal) Kits, Stinger's 4000 Series Wiring kits have all the essentials for a professional installation. Featuring 100% oxygen-free finned copper for a pure uninterrupted transfer of power. Tru-spec cables/wires meet or exceed the industry standard of copper required for the gauge size.

## SK4201

### 1/0GA Power Wiring Kit

DESIGNED SPECIFICALLY FOR CAR AUDIO SYSTEMS UP TO 3400 WATTS OR 250 AMPs



#### Kit Includes:

- 18ft./5.5m Matte Red Hyper-Twist 1/0GA Power Wire
- 3ft./0.9m Matte Black Hyper-Twist 1/0GA Ground Wire
- 17ft./5.2m Matte Blue 18GA Remote Turn-On Wire
- SPD5201 ANL Fuse-Holder
- 250 Amp Shoc-Krome ANL Fuse
- 1/0GA Crimp Ring Terminals Pre-Installed
- 16GA Blue Butt Connector
- 1/0GA Snap-In Protective Firewall Grommet
- Self-Drilling Mounting Screws
- (10) 7"/17.8cm Wire Ties

## SK4241

### 4GA Power Wiring Kit

DESIGNED SPECIFICALLY FOR CAR AUDIO SYSTEMS UP TO 1500 WATTS OR 150 AMPs



#### Kit Includes:

- 18ft./5.5m Matte Red Hyper-Twist 4GA Power Wire
- 3ft./0.9m Matte Black Hyper-Twist 4GA Ground Wire
- 17ft./5.2m Matte Blue 18GA Remote Turn-On Wire
- SPD5801 Mini-ANL (MIDI) Fuse-Holder
- 150 Amp Shoc-Krome MIDI Fuse
- 4GA Crimp Ring Terminals Pre-Installed
- 16GA Blue Butt Connector
- 4GA Snap-In Protective Firewall Grommet
- Self-Drilling Mounting Screws
- (10) 7"/17.8cm Wire Ties

## SK4281

### 8GA Power Wiring Kit

DESIGNED SPECIFICALLY FOR CAR AUDIO SYSTEMS UP TO 600 WATTS OR 60 AMPs



#### Kit Includes:

- 18ft./5.5m Matte Red Hyper-Twist 8GA Power Wire
- 3ft./0.9m Matte Black Hyper-Twist 8GA Ground Wire
- 17ft./5.2m Matte Blue 18GA Remote Turn-On Wire
- SPD5101 AGU Fuse-Holder
- 60 Amp AGU Fuse
- 8GA Crimp Ring Terminals Pre-Installed
- 16GA Blue Butt Connector
- 8GA Snap-In Protective Firewall Grommet
- Self-Drilling Mounting Screws
- (10) 7"/17.8cm Wire Ties

## 4000 series wiring kits

### Complete Wiring Kits: Power & Signal

#### SK4641

##### 4GA Complete Wiring Kit (power + signal)

DESIGNED SPECIFICALLY FOR CAR AUDIO SYSTEMS UP TO 1500 WATTS OR 150 AMP



##### Kit Includes:

- 18ft./5.5m Matte Red Hyper-Twist 4GA Power Wire
- 3ft./0.9m Matte Black Hyper-Twist 4GA Ground Wire
- (1) 17ft./5.2m 4000 Series 2-Channel Audio Interconnect (SI4217)
- 17ft./5.2m Matte Blue 18GA Remote Turn-On Wire
- SPD5801 Mini-ANL (MIDI) Fuse-Holder
- 150 Amp Shoc-Krome MIDI Fuse
- 4GA Crimp Ring Terminals Pre-Installed
- 16GA Blue Butt Connector
- 4GA Snap-In Protective Firewall Grommet
- Self-Drilling Mounting Screws
- (10) 7"/17.8cm Wire Ties

#### SK4681

##### 8GA Complete Wiring Kit (power + signal)

DESIGNED SPECIFICALLY FOR CAR AUDIO SYSTEMS UP TO 600 WATTS OR 60 AMP



##### Kit Includes:

- 18ft./5.5m Matte Red Hyper-Twist 8GA Power Wire
- 3ft./0.9m Matte Black Hyper-Twist 8GA Ground Wire
- (1) 17ft./5.2m 4000 Series 2-Channel Audio Interconnect (SI4217)
- 17ft./5.2m Matte Blue 18Ga Remote Turn-On Wire
- SPD5101 AGU Fuse-Holder
- 60 Amp AGU Fuse
- 8GA Crimp Ring Terminals Pre-Installed
- 16GA Blue Butt Connector
- 8GA Snap-In Protective Firewall Grommet
- Self-Drilling Mounting Screws
- (10) 7"/17.8cm Wire Ties

#### SK46101

##### 10GA Complete Wiring Kit (power + signal)

DESIGNED SPECIFICALLY FOR CAR AUDIO SYSTEMS UP TO 300 WATTS OR 30 AMP



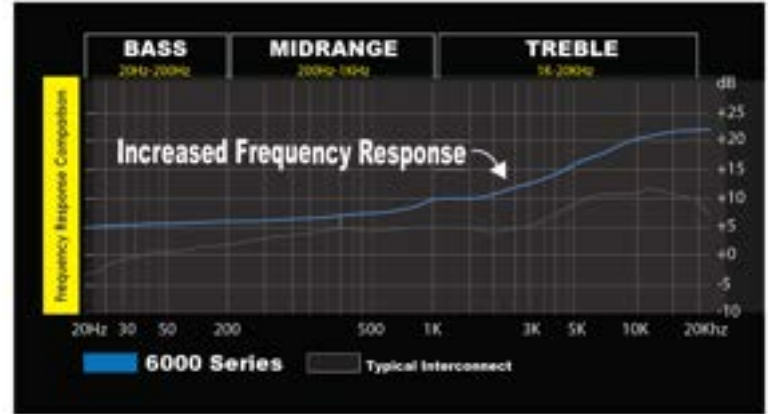
##### Kit Includes:

- 18ft./5.5m Matte Red Hyper-Twist 10GA Power Wire
- 3ft./0.9m Matte Black Hyper-Twist 10GA Ground Wire
- (1) 17ft./5.2m 4000 Series 2-Channel Audio Interconnect (SI4217)
- 17ft./5.2m Matte Blue 18Ga Remote Turn-On Wire
- Water-Resistant ATC Fuse-Holder
- 30 Amp ATC Fuse
- 10GA Crimp Ring Terminals Pre-Installed
- 16GA Blue Butt Connector
- 10GA Snap-In Protective Firewall Grommet
- Self-Drilling Mounting Screws
- (10) 7"/17.8cm Wire Ties

Stinger offers peak performance interconnects that are flexible and look great even in highly complicated installations.

## Features:

- Stinger Audiophile Grade Design Improves Sound Quality, Noise Rejection, and Offers Easy Installation
- Oversized OFC Conductors Provide Excellent Sound Quality
- Continuous Connection Construction (C3 Tech) Provides Unmatched Signal Transfer
- Mylar Shielding for Increased Noise Rejection
- Directional Twisted-Pair Construction Provides Protection against Interference
- Split-Tip Machined Metal Connector Allows Better Signal Transfer
- Twisted Pair Winding Patterns Improve Clarity and Broaden Dynamic Range
- Blue Protective Jacket Looks Great and Minimizes Friction for Easy Install
- Molded Strain Reliefs for Excellent Durability
- 3 Conductors per Channel for a Total of 6 Conductors (2 Channels)
- Color Coded Channel Identification



Directional High Rate  
Twisted-Pair, Shielded  
Construction  
Mylar Foil Shield  
Precision Machined  
Metal, Split-Tip RCA  
Ends  
Continuous Connection  
Construction (C3 Tech)

## 6000 SERIES RANGE

### 2-CHANNEL INTERCONNECTS

- SI6220: Length: 20Ft/6.1m
- SI6217: Length: 17Ft/5.2m
- SI6212: Length: 12Ft/3.7m
- SI626: Length: 6Ft/1.8m
- SI623: Length: 3Ft/0.9m

### 4-CHANNEL INTERCONNECTS

- SI6420: Length: 20Ft/6.1m
- SI6417: Length: 17Ft/5.2m
- SI6412: Length: 12Ft/3.7m

### Y CONNECTORS

- SI62YF: 2 female - 1 male
- SI62YM: 2 male - 1 female

# 4000 series interconnects

## Features:

- Stinger Audiophile Grade Design Improves Sound Quality, Noise Rejection, and Offers Easy Installation
- Oversized OFC Conductors Provide Excellent Sound Quality
- Continuous Connection Construction (C3 Tech) Provides Unmatched Signal Transfer
- Split-Tip Connector Allows Better Signal Transfer
- Stinger Audiophile Grade Design Improves Sound Quality, Noise Rejection, and Offers Easy Installation
- Compact Connector Design for Easy Installation
- Twisted Pair Winding Patterns Improve Clarity and Broaden Dynamic Range
- Minimalistic Clear Protective Jacket Looks Great and Minimizes Friction for Easy Install
- Molded Strain Reliefs for Extra Durability
- Directional Twisted-Pair Construction Provides Protection against Interference
- Stingers Proprietary Shoc-Krome-Plated Connectors for Excellent Signal Transfer
- Color Coded Channel Identification

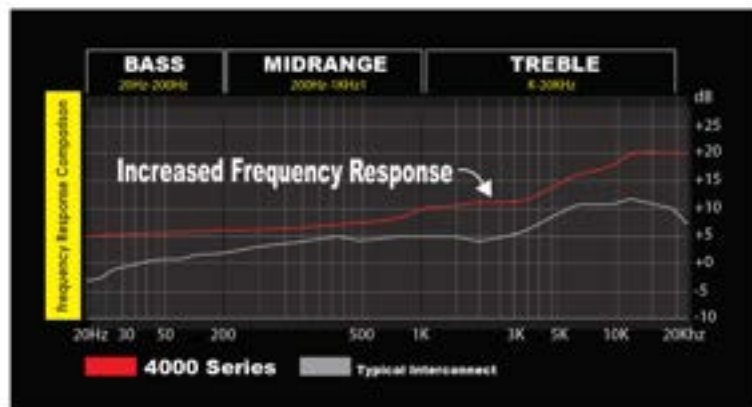


Oversized OFC  
Conductors

Directional, Twisted-Pair  
Construction

Split-Tip RCA Ends

Continuous Connection  
Construction (C3 Tech)



## 4000 SERIES RANGE

### 2-CHANNEL INTERCONNECTS

- SI4220: Length: 20Ft/6.1m
- SI4217: Length: 17Ft/5.2m
- SI4215: Length: 15Ft/4.6m
- SI4212: Length: 12Ft/3.7m
- SI429: Length: 9Ft/2.7m
- SI426: Length: 6Ft/1.8m
- SI423: Length: 3Ft/0.9m
- SI421.5: Length: 1.5Ft/0.5m
- SI42YF: Length: 2 female - 1 male
- SI42YM: 2 male - 1 female

### 4-CHANNEL INTERCONNECTS

- SI4420: Length: 20Ft/6.1m
- SI4417: Length: 17Ft/5.2m
- SI4412: Length: 12Ft/3.7m

### 6-CHANNEL INTERCONNECTS

- SI4620: Length: 20Ft/6.1m
- SI4617: Length: 17Ft/5.2m
- SI4612: Length: 12Ft/3.7m

### 3.5mm TO RCA

- SI436: Length: 6Ft/1.8m
- SI433: Length: 3Ft/0.9m

### 3.5mm TO 3.5mm

- SI416: Length: 6Ft/1.8m
- SI413: Length: 3Ft/0.9m

### AUDIO/VIDEO

- SI4920: Length: 20Ft/6.1m
- SI4917: Length: 17Ft/5.2m
- SI4912: Length: 12Ft/3.7m
- SI496: Length: 6Ft/1.8m
- SI493: Length: 3Ft/0.9m

### VIDEO

- SI4820: Length: 20Ft/6.1m
- SI4817: Length: 17Ft/5.2m
- SI4812: Length: 12Ft/3.7m
- SI486: Length: 6Ft/1.8m
- SI483: Length: 3Ft/0.9m

RoadKill Ultimate combines the benefits of our Expert aluminum/butyl material and Overkill acoustic foam to create the Ultimate noise killer. The combination of these two products will more than double the results than when used on their own.

Reduce a massive amount of unwanted resonating noise (panel vibrations, road noise, exhaust, engine noise & vibration) allowing your audio system to sound even louder and with more clarity and definition.

## Features:

- Improves overall audio frequency response and bass output
- Kills panel resonance, squeaks and rattles
- Self-adhesive for easy installation
- Use on all metal panels, doors, roof, floor, firewall & trunk
- Highest damping vs. weight ratio of any material available
- Waterproof

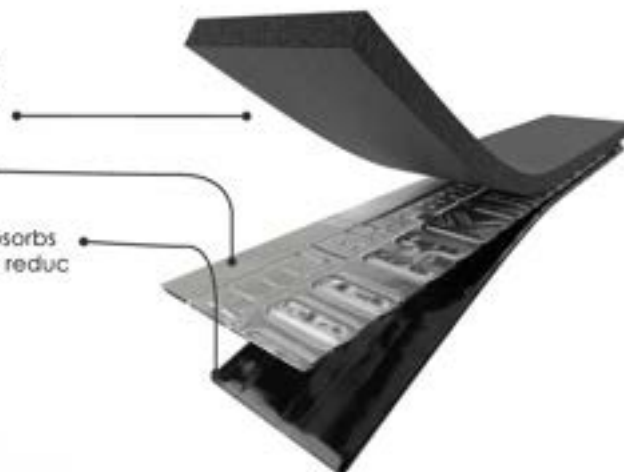
RoadKill Ultimate	
Minimum Thickness	5.5mm
Weight	0.55lbs/ft <sup>2</sup>
Aluminum Layer	3 mil
Foam Layer	2 mil

## ROADKILL ULTIMATE DNA

Acoustic foam outer layer that absorbs and diffuses high frequency sounds, acts as a thermal barrier, and absorbs soundwaves that are otherwise trapped inside the empty space behind door panels.

Aluminum middle layer helps with heat dissipation.

Proprietary, ultra-dense butyl blend bottom layer absorbs acoustical energy that causes unwanted rattles and reduces vibrations.



### Ultimate Universal Kit

**RKU8**

8 sq-ft total  
2/pack (18" x 32")



### Ultimate Bulk Pack

**RKU36**

36 sq-ft total  
9/pack (18" x 32")

## Features:

- Aluminum outer layer
- Self-adhesive
- Easy installation
- Use on all metal panels, doors, roof, floor, firewall & trunk
- Kills panel resonance, squeaks and rattles
- Highest damping vs. weight ratio of any material available
- Improves overall audio frequency response and bass output

## RoadKill Expert

Minimum Thickness	0.080in
Weight	0.65lbs/ft <sup>2</sup>
Aluminum Layer	6 mil



**Bulk Pack  
RKX80B**  
80 sq-ft total  
Black foil roll



**Bulk Pack  
RKX36B**  
36 sq-ft. total  
9/pack (18" x 32")



**Trunk Kit  
RKXTK**  
20 sq-ft total  
10/pack (12" x 24")



**Door Kit  
RKXDK**  
12 sq-ft total  
6/pack (12" x 24")



**Speaker Kit  
RKXSK**  
1.7 sq-ft  
2/pack (10" x 12")



**Universal Kit  
RKX4**  
4 sq-ft total  
2/pack (12" x 24")



**License Plate Kit  
RKXLIC**  
Includes frame  
(4" x 12" + 2" x 6")

## RoadKill STEALTH

### RoadKill Stealth

#### Features:

- Stealth black aluminum
- Lightweight construction
- Self-adhesive
- Easy installation
- Similar performance to Expert Series
- 25% Less weight



Minimum Thickness	1.55mm
Weight	0.45lbs/ft²
Aluminum Layer	2 mil

#### Stealth Bulk Pack RKST36B

36 sq-ft, total  
9/pack (18" x 32")

#### Stealth Speaker Kit RKSTSK

1.7 sq-ft,  
2/pack (10" x 12")

## RoadKill Fast Rings

### FAST RINGS - Enhance the sound of any speaker!

Our 3-piece foam ring speaker enhancement system solves the problem of acoustically coupling aftermarket speakers to factory speaker openings. The RoadKill Fast Rings kit increases speaker output, improves the projection of the audio into the car cabin and reduces unwanted rear reflections that can degrade the sound.



**RKFR6** fits 6" and 6.5" Speakers

**RKFR69** fits 6 x 9" Speakers

**RKFR5** fits 5" and 5.25" Speakers

**RKFR5768** fits 5 x 7" and 6 x 8" Speakers



#### Includes:

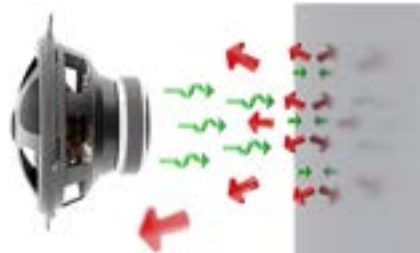
1. Circular foam pad goes behind the speaker to absorb unwanted reflections on hard surfaces, such as inside a car door
2. Middle ring to mount around the outer edge of the speaker
3. Gasket for speaker mounting to the baffle plate surface

### SPEAKER STANDING WAVE RINGS

Eliminate distortion and improve bass response with one quick-step by installing Stinger RoadKill Speaker Standing Wave Rings. Stinger RoadKill Speaker Standing Wave Rings absorb and deflect rear energy from the back of the speaker, keeping the energy from returning and interfering with the front wave output. The easy peel and stick adhesive allows for fast, clean installation when adding these rings to speaker installs, while the egg crate acoustic foam decreases distortion and increases bass response.

#### RKSP2

2/Pack (130mm ea)  
Black foil roll  
Waterproof



Without Wave Rings, standing waves are reflected, diminishing sound quality.



With Wave Rings, the energy is absorbed, delivering pure sound.



DLS SWEDEN



DLS.SE



DESIGNED & ENGINEERED  
IN SWEDEN